



[Go to Product page](#)

Datasheet for ABIN1536609
anti-Calcitonin antibody (AA 56-84)

1 Image

Overview

Quantity:	400 µL
Target:	Calcitonin (Calca)
Binding Specificity:	AA 56-84
Reactivity:	Human
Host:	Mouse
Clonality:	Monoclonal
Conjugate:	This Calcitonin antibody is un-conjugated
Application:	Western Blotting (WB)

Product Details

Immunogen:	This CALCA/CT antibody is generated from mice immunized with a KLH conjugated synthetic peptide between 56-84 amino acids from human CALCA/CT.
Clone:	406CT21-4-3
Isotype:	IgM
Purification:	This antibody is prepared by Euglobin precipitation followed by dialysis against PBS.

Target Details

Target:	Calcitonin (Calca)
Alternative Name:	CALCA/CT (Calca Products)
Background:	This gene encodes the peptide hormones calcitonin, calcitonin gene-related peptide and

Target Details

katacalcin by tissue-specific alternative RNA splicing of the gene transcripts and cleavage of inactive precursor proteins. Calcitonin is involved in calcium regulation and acts to regulate phosphorus metabolism. Calcitonin gene-related peptide functions as a vasodilator while katacalcin is a calcium-lowering peptide. Multiple transcript variants encoding different isoforms have been found for this gene.

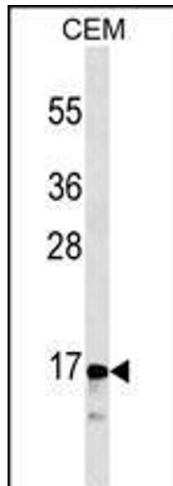
Molecular Weight:	15467
Gene ID:	796
NCBI Accession:	NP_001029124 , NP_001732
UniProt:	P01258

Application Details

Application Notes:	WB: 1:100~250
Restrictions:	For Research Use only

Handling

Format:	Liquid
Buffer:	Purified monoclonal antibody supplied in PBS with 0.09 % (W/V) sodium azide.
Preservative:	Sodium azide
Precaution of Use:	This product contains Sodium azide: a POISONOUS AND HAZARDOUS SUBSTANCE which should be handled by trained staff only.
Storage:	4 °C,-20 °C
Storage Comment:	CALCA/CT Antibody can be refrigerated at 2-8 °C for up to 6 months. For long term storage, keep at -20 °C.
Expiry Date:	6 months



Western Blotting

Image 1. CALCA/CT Antibody (ABIN1536609 and ABIN2843838) western blot analysis in CEM cell line lysates (35 µg/lane). This demonstrates the CALCA/CT antibody detected the CALCA/CT protein (arrow).