

Datasheet for ABIN1536611
anti-FKRP antibody (C-Term)[Go to Product page](#)

1 Image

Overview

Quantity:	400 µL
Target:	FKRP
Binding Specificity:	AA 418-444, C-Term
Reactivity:	Human
Host:	Mouse
Clonality:	Monoclonal
Application:	Western Blotting (WB)

Product Details

Immunogen:	This FKRP antibody is generated from mice immunized with a KLH conjugated synthetic peptide between 418-444 amino acids from the C-terminal region of human FKRP.
Clone:	386CT13-1-9
Isotype:	IgG1
Predicted Reactivity:	M
Purification:	This antibody is purified through a protein G column, followed by dialysis against PBS.

Target Details

Target:	FKRP
Alternative Name:	FKRP (FKRP Products)
Background:	This gene encodes a protein which is targeted to the medial Golgi apparatus and is necessary

Target Details

for posttranslational modification of dystroglycan. Mutations in this gene have been associated with congenital muscular dystrophy, mental retardation, and cerebellar cysts. Several alternatively spliced transcript variants of this gene have been described, but the full-length nature of some of these variants has not been determined. [provided by RefSeq].

Molecular Weight: 54568

Gene ID: 79147

NCBI Accession: [NP_001034974](#), [NP_077277](#)

UniProt: [Q9H9S5](#)

Pathways: [Regulation of Carbohydrate Metabolic Process](#)

Application Details

Application Notes: WB: 1:100

Restrictions: For Research Use only

Handling

Format: Liquid

Buffer: Purified monoclonal antibody supplied in PBS with 0.09 % (W/V) sodium azide.

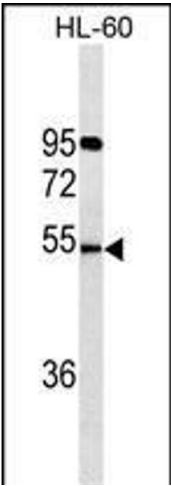
Preservative: Sodium azide

Precaution of Use: This product contains Sodium azide: a POISONOUS AND HAZARDOUS SUBSTANCE which should be handled by trained staff only.

Storage: 4 °C,-20 °C

Storage Comment: FKRP Antibody (C-term) can be refrigerated at 2-8 °C for up to 6 months. For long term storage, keep at -20 °C.

Expiry Date: 6 months



Western Blotting

Image 1. FKRP Antibody (C-term) (ABIN1536611 and ABIN2843847) western blot analysis in HL-60 cell line lysates (35 µg/lane). This demonstrates the FKRP antibody detected the FKRP protein (arrow).