

Datasheet for ABIN1536617

anti-Arylsulfatase A antibody (C-Term)[Go to Product page](#)**1** Image

Overview

Quantity:	400 µL
Target:	Arylsulfatase A (ARSA)
Binding Specificity:	AA 408-439, C-Term
Reactivity:	Human
Host:	Mouse
Clonality:	Monoclonal
Conjugate:	This Arylsulfatase A antibody is un-conjugated
Application:	Western Blotting (WB)

Product Details

Immunogen:	This ARSA antibody is generated from mice immunized with a KLH conjugated synthetic peptide between 408-439 amino acids from the C-terminal region of human ARSA.
Clone:	498CT24-1-2
Isotype:	IgG2a
Purification:	This antibody is purified through a protein G column, followed by dialysis against PBS.

Target Details

Target:	Arylsulfatase A (ARSA)
Alternative Name:	ARSA (ARSA Products)
Background:	The protein encoded by this gene hydrolyzes cerebroside sulfate to cerebroside and sulfate.

Target Details

Defects in this gene lead to metachromatic leucodystrophy (MLD), a progressive demyelination disease which results in a variety of neurological symptoms and ultimately death. Alternatively spliced transcript variants have been described for this gene.

Molecular Weight: 53588

Gene ID: 410

NCBI Accession: [NP_000478](#), [NP_001078894](#), [NP_001078895](#), [NP_001078896](#), [NP_001078897](#)

UniProt: [P15289](#)

Application Details

Application Notes: WB: 1:100~250

Restrictions: For Research Use only

Handling

Format: Liquid

Buffer: Purified monoclonal antibody supplied in PBS with 0.09 % (W/V) sodium azide.

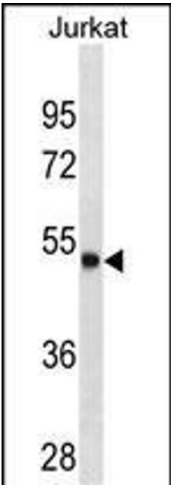
Preservative: Sodium azide

Precaution of Use: This product contains Sodium azide: a POISONOUS AND HAZARDOUS SUBSTANCE which should be handled by trained staff only.

Storage: 4 °C, -20 °C

Storage Comment: ARSA Antibody (C-term) can be refrigerated at 2-8 °C for up to 6 months. For long term storage, keep at -20 °C.

Expiry Date: 6 months



Western Blotting

Image 1. ARSA Antibody (C-term) (ABIN1536617 and ABIN2843873) western blot analysis in Jurkat cell line lysates (35 µg/lane). This demonstrates the ARSA antibody detected the ARSA protein (arrow).