



[Go to Product page](#)

Datasheet for ABIN1536621
anti-ADA antibody (C-Term)

1 Image

Overview

Quantity:	400 µL
Target:	ADA
Binding Specificity:	AA 287-314, C-Term
Reactivity:	Human
Host:	Mouse
Clonality:	Monoclonal
Conjugate:	This ADA antibody is un-conjugated
Application:	Western Blotting (WB)

Product Details

Immunogen:	This ADA antibody is generated from mice immunized with a KLH conjugated synthetic peptide between 287-314 amino acids from the C-terminal region of human ADA.
Clone:	608CT2-1-3
Isotype:	IgG1
Purification:	This antibody is purified through a protein G column, followed by dialysis against PBS.

Target Details

Target:	ADA
Alternative Name:	ADA (ADA Products)
Background:	This gene encodes an enzyme that catalyzes the hydrolysis of adenosine to inosine. Various

Target Details

mutations have been described for this gene and have been linked to human diseases.

Deficiency in this enzyme causes a form of severe combined immunodeficiency disease (SCID), in which there is dysfunction of both B and T lymphocytes with impaired cellular immunity and decreased production of immunoglobulins, whereas elevated levels of this enzyme have been associated with congenital hemolytic anemia.

Molecular Weight: 40764

Gene ID: 100

NCBI Accession: [NP_000013](#)

UniProt: [P00813](#)

Pathways: [Regulation of G-Protein Coupled Receptor Protein Signaling, Ribonucleoside Biosynthetic Process](#)

Application Details

Application Notes: WB: 1:100~250

Restrictions: For Research Use only

Handling

Format: Liquid

Buffer: Purified monoclonal antibody supplied in PBS with 0.09 % (W/V) sodium azide.

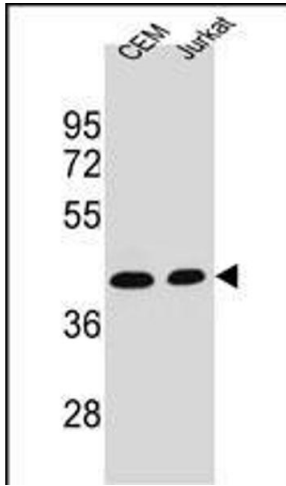
Preservative: Sodium azide

Precaution of Use: This product contains Sodium azide: a POISONOUS AND HAZARDOUS SUBSTANCE which should be handled by trained staff only.

Storage: 4 °C,-20 °C

Storage Comment: ADA Antibody (C-term) can be refrigerated at 2-8 °C for up to 6 months. For long term storage, keep at -20 °C.

Expiry Date: 6 months



Western Blotting

Image 1. ADA Antibody (C-term) (ABIN1536621 and ABIN2843881) western blot analysis in CEM, Jurkat cell line lysates (35 μ g/lane). This demonstrates the ADA antibody detected the ADA protein (arrow).