

Datasheet for ABIN1536624
anti-KDM2A antibody (C-Term)[Go to Product page](#)

1 Image

Overview

Quantity:	400 µL
Target:	KDM2A
Binding Specificity:	AA 867-896, C-Term
Reactivity:	Human
Host:	Rabbit
Clonality:	Polyclonal
Conjugate:	This KDM2A antibody is un-conjugated
Application:	Western Blotting (WB)

Product Details

Immunogen:	This JHDM1a/FBXL11 antibody is generated from rabbits immunized with a KLH conjugated synthetic peptide between 867-896 amino acids from the C-terminal region of human JHDM1a/FBXL11.
Clone:	RB14305
Isotype:	Ig Fraction
Predicted Reactivity:	M
Purification:	This antibody is prepared by Saturated Ammonium Sulfate (SAS) precipitation followed by dialysis against PBS.

Target Details

Target:	KDM2A
---------	-------

Target Details

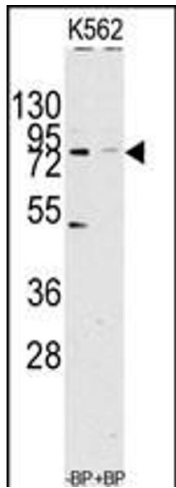
Alternative Name:	JHDM1a/FBXL11 (KDM2A Products)
Background:	JHDM1a/FBXL11 is a member of the F-box protein family which is characterized by an approximately 40 amino acid motif, the F-box. The F-box proteins constitute one of the four subunits of ubiquitin protein ligase complex called SCFs (SKP1-cullin-F-box), which function in phosphorylation-dependent ubiquitination. The F-box proteins are divided into 3 classes: Fbws containing WD-40 domains, Fbls containing leucine-rich repeats, and Fbxs containing either different protein-protein interaction modules or no recognizable motifs. JHDM1a/FBXL11 belongs to the Fbls class and, in addition to an F-box, contains at least 6 highly degenerated leucine-rich repeats.
Molecular Weight:	132793
Gene ID:	22992
NCBI Accession:	NP_001243334 , NP_036440
UniProt:	Q9Y2K7
Pathways:	Warburg Effect

Application Details

Application Notes:	WB: 1:1000
Restrictions:	For Research Use only

Handling

Format:	Liquid
Buffer:	Purified polyclonal antibody supplied in PBS with 0.09 % (W/V) sodium azide.
Preservative:	Sodium azide
Precaution of Use:	This product contains Sodium azide: a POISONOUS AND HAZARDOUS SUBSTANCE which should be handled by trained staff only.
Storage:	4 °C, -20 °C
Storage Comment:	Maintain refrigerated at 2-8 deg C for up to 6 months. For long term storage store at -20 deg C in small aliquots to prevent freeze-thaw cycles.
Expiry Date:	6 months



Western Blotting

Image 1. Western blot analysis of anti-JHDM1a/FBXL11 Antibody (C-term) (ABIN1536624 and ABIN2844141) pre-incubated with(right lane) and without(left lane) blocking peptide in Jurkat cell line lysate. JHDM1a(arrow) was detected using the purified Pab.