



[Go to Product page](#)

Datasheet for ABIN1536637  
**anti-MCF2L antibody (C-Term)**

1 Image

Overview

Quantity:	400 µL
Target:	MCF2L
Binding Specificity:	AA 1049-1075, C-Term
Reactivity:	Human
Host:	Rabbit
Clonality:	Polyclonal
Conjugate:	This MCF2L antibody is un-conjugated
Application:	Western Blotting (WB)

Product Details

Immunogen:	This MCF2L antibody is generated from rabbits immunized with a KLH conjugated synthetic peptide between 1049-1075 amino acids from the C-terminal region of human MCF2L.
Clone:	RB38890
Isotype:	Ig Fraction
Purification:	This antibody is purified through a protein A column, followed by peptide affinity purification.

Target Details

Target:	MCF2L
Alternative Name:	MCF2L ( <a href="#">MCF2L Products</a> )
Background:	Guanine nucleotide exchange factor that potentially links pathways that signal through RAC1,

## Target Details

---

RHOA and CDC42. Catalyzes guanine nucleotide exchange on RHOA and CDC42 and interacts specifically with the GTP-bound form of RAC1, suggesting that it functions as an effector of RAC1. May also participate in axonal transport in the brain. Becomes activated and highly tumorigenic by truncation of the N-terminus (By similarity). Isoform 5 activates CDC42.

Molecular Weight: 128109

Gene ID: 23263

NCBI Accession: [NP\\_001106203](#), [NP\\_079255](#)

UniProt: [O15068](#)

Pathways: [Neurotrophin Signaling Pathway](#), [Metabolism of Steroid Hormones and Vitamin D](#), [Thyroid Hormone Synthesis](#)

## Application Details

---

Application Notes: WB: 1:1000

Restrictions: For Research Use only

## Handling

---

Format: Liquid

Buffer: Purified polyclonal antibody supplied in PBS with 0.09 % (W/V) sodium azide.

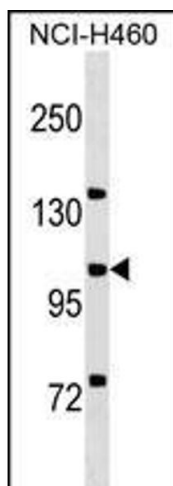
Preservative: Sodium azide

Precaution of Use: This product contains Sodium azide: a POISONOUS AND HAZARDOUS SUBSTANCE which should be handled by trained staff only.

Storage: 4 °C, -20 °C

Storage Comment: MCF2L Antibody (C-term) can be refrigerated at 2-8 °C for up to 6 months. For long term storage, keep at -20 °C.

Expiry Date: 6 months



#### Western Blotting

**Image 1.** MCF2L Antibody (C-term) (ABIN1536637 and ABIN2850226) western blot analysis in NCI- cell line lysates (35 µg/lane). This demonstrates the MCF2L antibody detected the MCF2L protein (arrow).