

Datasheet for ABIN1536643
anti-CCDC144C antibody (C-Term)[Go to Product page](#)

1 Image

Overview

Quantity:	400 µL
Target:	CCDC144C
Binding Specificity:	AA 1064-1090, C-Term
Reactivity:	Human
Host:	Rabbit
Clonality:	Polyclonal
Application:	Western Blotting (WB)

Product Details

Immunogen:	This CCDC144C antibody is generated from rabbits immunized with a KLH conjugated synthetic peptide between 1064-1090 amino acids from the C-terminal region of human CCDC144C.
Clone:	RB38721
Isotype:	Ig Fraction
Purification:	This antibody is purified through a protein A column, followed by peptide affinity purification.

Target Details

Target:	CCDC144C
Alternative Name:	CCDC144C (CCDC144C Products)
Background:	The function of this protein remains unknown.

Target Details

Molecular Weight: 143112

UniProt: [Q8IYA2](#)

Application Details

Application Notes: WB: 1:1000

Restrictions: For Research Use only

Handling

Format: Liquid

Buffer: Purified polyclonal antibody supplied in PBS with 0.09 % (W/V) sodium azide.

Preservative: Sodium azide

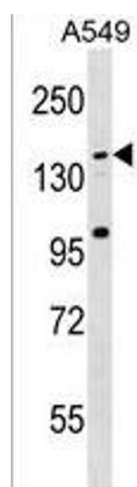
Precaution of Use: This product contains Sodium azide: a POISONOUS AND HAZARDOUS SUBSTANCE which should be handled by trained staff only.

Storage: 4 °C, -20 °C

Storage Comment: CCDC144C Antibody (C-term) can be refrigerated at 2-8 °C for up to 6 months. For long term storage, keep at -20 °C.

Expiry Date: 6 months

Images



Western Blotting

Image 1. CCDC144C Antibody (C-term) (ABIN1536643 and ABIN2850209) western blot analysis in A549 cell line lysates (35 µg/lane). This demonstrates the CCDC144C antibody detected the CCDC144C protein (arrow).