

Datasheet for ABIN1536646
anti-SIN3A antibody (C-Term)[Go to Product page](#)

1 Image

Overview

Quantity:	400 µL
Target:	SIN3A
Binding Specificity:	AA 1078-1106, C-Term
Reactivity:	Mouse
Host:	Rabbit
Clonality:	Polyclonal
Conjugate:	This SIN3A antibody is un-conjugated
Application:	Western Blotting (WB)

Product Details

Immunogen:	This Mouse Sin3a antibody is generated from rabbits immunized with a KLH conjugated synthetic peptide between 1078-1106 amino acids from the C-terminal region of mouse Sin3a.
Clone:	RB40011
Isotype:	Ig Fraction
Predicted Reactivity:	H
Purification:	This antibody is purified through a protein A column, followed by peptide affinity purification.

Target Details

Target:	SIN3A
Alternative Name:	Sin3a (SIN3A Products)

Target Details

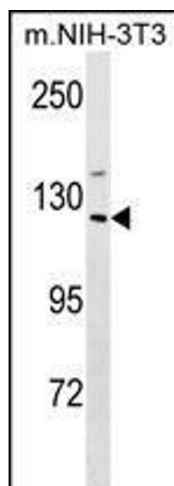
Background:	Sin3a acts as a transcriptional repressor. Interacts with MXI1 to repress MYC responsive genes and antagonize MYC oncogenic activities. Also interacts with MAD-MAX heterodimers by binding to MAD. The heterodimer then represses transcription by tethering SIN3A to DNA. Acts as a corepressor for REST.
Molecular Weight:	145088
Gene ID:	20466
NCBI Accession:	NP_001103820 , NP_001103821 , NP_035508
UniProt:	Q60520
Pathways:	Activation of Innate immune Response , Carbohydrate Homeostasis , Chromatin Binding , Regulation of Lipid Metabolism by PPARalpha

Application Details

Application Notes:	WB: 1:1000
Restrictions:	For Research Use only

Handling

Format:	Liquid
Buffer:	Purified polyclonal antibody supplied in PBS with 0.09 % (W/V) sodium azide.
Preservative:	Sodium azide
Precaution of Use:	This product contains Sodium azide: a POISONOUS AND HAZARDOUS SUBSTANCE which should be handled by trained staff only.
Storage:	4 °C, -20 °C
Storage Comment:	Mouse Sin3a Antibody (C-term) can be refrigerated at 2-8 °C for up to 6 months. For long term storage, keep at -20 °C.
Expiry Date:	6 months



Western Blotting

Image 1. Mouse Sin3a Antibody (C-term) (ABIN1536646 and ABIN2838235) western blot analysis in mouse NIH-3T3 cell line lysates (35 µg/lane). This demonstrates the Sin3a antibody detected the Sin3a protein (arrow).