

Datasheet for ABIN1536647  
**anti-UBE2D3 antibody (C-Term)**[Go to Product page](#)

## 2 Images

## Overview

Quantity:	400 µL
Target:	UBE2D3
Binding Specificity:	AA 109-136, C-Term
Reactivity:	Human
Host:	Rabbit
Clonality:	Polyclonal
Application:	Western Blotting (WB)

## Product Details

Immunogen:	This UBE2D3 antibody is generated from rabbits immunized with a KLH conjugated synthetic peptide between 109-136 amino acids from the C-terminal region of human UBE2D3.
Clone:	RB36300
Isotype:	Ig Fraction
Predicted Reactivity:	Pig, B, Pr, M, Rat
Purification:	This antibody is purified through a protein A column, followed by peptide affinity purification.

## Target Details

Target:	UBE2D3
Alternative Name:	UBE2D3 ( <a href="#">UBE2D3 Products</a> )
Background:	The modification of proteins with ubiquitin is an important cellular mechanism for targeting

## Target Details

abnormal or short-lived proteins for degradation. Ubiquitination involves at least three classes of enzymes: ubiquitin-activating enzymes, or E1s, ubiquitin-conjugating enzymes, or E2s, and ubiquitin-protein ligases, or E3s. This gene encodes a member of the E2 ubiquitin-conjugating enzyme family. This enzyme functions in the ubiquitination of the tumor-suppressor protein p53, which is induced by an E3 ubiquitin-protein ligase. Multiple spliced transcript variants have been found for this gene, but the full-length nature of some variants has not been determined.

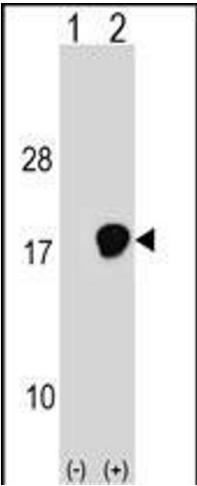
Molecular Weight:	16687
Gene ID:	7323
NCBI Accession:	<a href="#">NP_003331</a> , <a href="#">NP_871615</a> , <a href="#">NP_871616</a> , <a href="#">NP_871617</a> , <a href="#">NP_871618</a> , <a href="#">NP_871619</a> , <a href="#">NP_871620</a> , <a href="#">NP_871621</a> , <a href="#">NP_871622</a>
UniProt:	<a href="#">P61077</a>
Pathways:	<a href="#">Activation of Innate immune Response</a> , <a href="#">Toll-Like Receptors Cascades</a>

## Application Details

Application Notes:	WB: 1:1000. WB: 1:1000
Restrictions:	For Research Use only

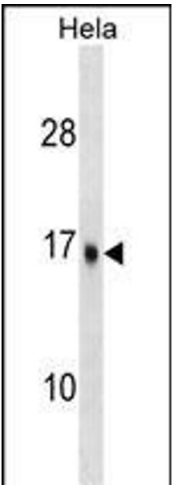
## Handling

Format:	Liquid
Buffer:	Purified polyclonal antibody supplied in PBS with 0.09 % (W/V) sodium azide.
Preservative:	Sodium azide
Precaution of Use:	This product contains Sodium azide: a POISONOUS AND HAZARDOUS SUBSTANCE which should be handled by trained staff only.
Storage:	4 °C,-20 °C
Storage Comment:	UBE2D3 Antibody (C-term) can be refrigerated at 2-8 °C for up to 6 months. For long term storage, keep at -20 °C.
Expiry Date:	6 months



Western Blotting

**Image 1.** Western blot analysis of UBE2D3 (arrow) using rabbit polyclonal UBE2D3 Antibody (C-term) (ABIN1536647 and ABIN2848493). 293 cell lysates (2 µg/lane) either nontransfected (Lane 1) or transiently transfected (Lane 2) with the UBE2D3 gene.



Western Blotting

**Image 2.** UBE2D3 Antibody (C-term) (ABIN1536647 and ABIN2848493) western blot analysis in HeLa cell line lysates (35 µg/lane). This demonstrates the UBE2D3 antibody detected the UBE2D3 protein (arrow).