

Datasheet for ABIN1536648
anti-EMP3 antibody (C-Term)[Go to Product page](#)

2 Images

Overview

Quantity:	400 µL
Target:	EMP3
Binding Specificity:	AA 109-137, C-Term
Reactivity:	Human
Host:	Rabbit
Clonality:	Polyclonal
Conjugate:	This EMP3 antibody is un-conjugated
Application:	Western Blotting (WB)

Product Details

Immunogen:	This EMP3 antibody is generated from rabbits immunized with a KLH conjugated synthetic peptide between 109-137 amino acids from the C-terminal region of human EMP3.
Clone:	RB37403
Isotype:	Ig Fraction
Purification:	This antibody is purified through a protein A column, followed by peptide affinity purification.

Target Details

Target:	EMP3
Alternative Name:	EMP3 (EMP3 Products)
Background:	EMP3 is probably involved in cell proliferation and cell-cell interactions.

Target Details

Molecular Weight:	18429
Gene ID:	2014
NCBI Accession:	NP_001416
UniProt:	P54852

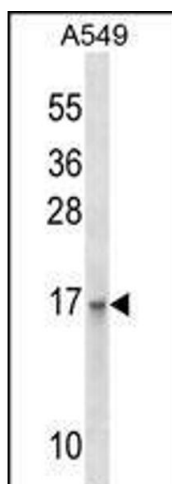
Application Details

Application Notes:	WB: 1:1000-1:2000. WB: 1:1000
Restrictions:	For Research Use only

Handling

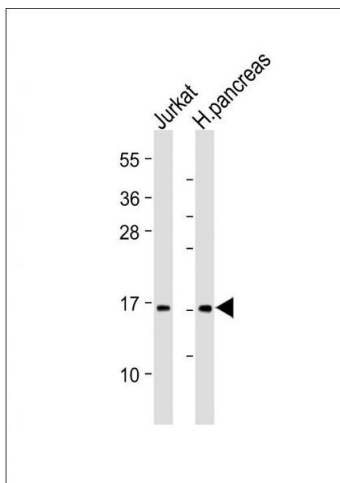
Format:	Liquid
Buffer:	Purified polyclonal antibody supplied in PBS with 0.09 % (W/V) sodium azide.
Preservative:	Sodium azide
Precaution of Use:	This product contains Sodium azide: a POISONOUS AND HAZARDOUS SUBSTANCE which should be handled by trained staff only.
Storage:	4 °C, -20 °C
Storage Comment:	EMP3 Antibody (C-term) can be refrigerated at 2-8 °C for up to 6 months. For long term storage, keep at -20 °C.
Expiry Date:	6 months

Images



Western Blotting

Image 1. E Antibody (C-term) (ABIN1536648 and ABIN2850119) western blot analysis in A549 cell line lysates (35 µg/lane). This demonstrates the E antibody detected the E protein (arrow).



Western Blotting

Image 2. All lanes : Anti-E Antibody (C-term) at 1:1000-1:2000 dilution Lane 1: Jurkat whole cell lysate Lane 2: Human pancreas lysate Lysates/proteins at 20 µg per lane. Secondary Goat Anti-Rabbit IgG, (H+L), Peroxidase conjugated at 1/10000 dilution. Predicted band size : 18 kDa Blocking/Dilution buffer: 5 % NFDM/TBST.