



[Go to Product page](#)

Datasheet for ABIN1536656  
**anti-UBE2D4 antibody (C-Term)**

1 Image

Overview

Quantity:	400 µL
Target:	UBE2D4
Binding Specificity:	AA 111-140, C-Term
Reactivity:	Human
Host:	Rabbit
Clonality:	Polyclonal
Conjugate:	This UBE2D4 antibody is un-conjugated
Application:	Western Blotting (WB)

Product Details

Immunogen:	This UBE2D4 antibody is generated from rabbits immunized with a KLH conjugated synthetic peptide between 111-140 amino acids from the C-terminal region of human UBE2D4.
Clone:	RB39825
Isotype:	Ig Fraction
Predicted Reactivity:	X
Purification:	This antibody is purified through a protein A column, followed by peptide affinity purification.

Target Details

Target:	UBE2D4
Alternative Name:	UBE2D4 ( <a href="#">UBE2D4 Products</a> )

## Target Details

---

Background:	UBE2D4 accepts ubiquitin from the E1 complex and catalyzes its covalent attachment to other proteins. In vitro able to promote polyubiquitination using all 7 ubiquitin Lys residues, but may prefer 'Lys-11' and 'Lys-48'-linked polyubiquitination.
Molecular Weight:	16649
Gene ID:	51619
NCBI Accession:	<a href="#">NP_057067</a>
UniProt:	<a href="#">Q9Y2X8</a>

## Application Details

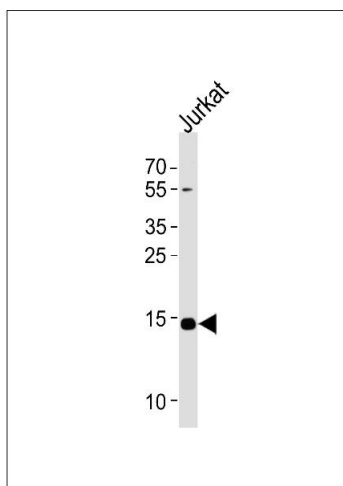
---

Application Notes:	WB: 1:1000
Restrictions:	For Research Use only

## Handling

---

Format:	Liquid
Buffer:	Purified polyclonal antibody supplied in PBS with 0.09 % (W/V) sodium azide.
Preservative:	Sodium azide
Precaution of Use:	This product contains Sodium azide: a POISONOUS AND HAZARDOUS SUBSTANCE which should be handled by trained staff only.
Storage:	4 °C, -20 °C
Storage Comment:	UBE2D4 Antibody (C-term) can be refrigerated at 2-8 °C for up to 6 months. For long term storage, keep at -20 °C.
Expiry Date:	6 months



### Western Blotting

**Image 1.** Western blot analysis of lysate from Jurkat cell line, using UBE2D4 Antibody (C-term) (ABIN1536656 and ABIN2838106). (ABIN1536656 and ABIN2838106) was diluted at 1:1000 at each lane. A goat anti-rabbit IgG H&L(HRP) at 1:5000 dilution was used as the secondary antibody. Lysate at 35 µg per lane.