



[Go to Product page](#)

Datasheet for ABIN1536667  
**anti-LRRC16A antibody (C-Term)**

1 Image

### Overview

Quantity:	400 µL
Target:	LRRC16A
Binding Specificity:	AA 1152-1178, C-Term
Reactivity:	Human, Mouse
Host:	Rabbit
Clonality:	Polyclonal
Application:	Western Blotting (WB)

### Product Details

Immunogen:	This LRRC16A antibody is generated from rabbits immunized with a KLH conjugated synthetic peptide between 1152-1178 amino acids from the C-terminal region of human LRRC16A.
Clone:	RB37596
Isotype:	Ig Fraction
Purification:	This antibody is purified through a protein A column, followed by peptide affinity purification.

### Target Details

Target:	LRRC16A
Alternative Name:	LRRC16A ( <a href="#">LRRC16A Products</a> )
Background:	LRRC16A binds CAPZA2 with high affinity and significantly decreases CAPZA2 affinity for actin barbed ends. Increases the rate of elongation from seeds in the presence of CAPZA2, however, seems unable to nucleate filaments. Rapidly uncaps barbed ends capped by CAPZA2 and

## Target Details

---

enhances barbed-end actin polymerization (By similarity).

Molecular Weight: 151557

Gene ID: 55604

NCBI Accession: [NP\\_060110](#)

UniProt: [Q5VZK9](#)

## Application Details

---

Application Notes: WB: 1:1000

Restrictions: For Research Use only

## Handling

---

Format: Liquid

Buffer: Purified polyclonal antibody supplied in PBS with 0.09 % (W/V) sodium azide.

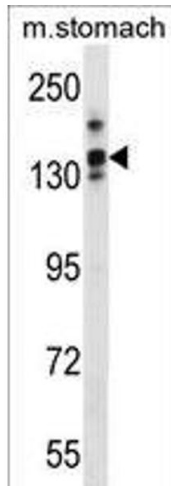
Preservative: Sodium azide

Precaution of Use: This product contains Sodium azide: a POISONOUS AND HAZARDOUS SUBSTANCE which should be handled by trained staff only.

Storage: 4 °C,-20 °C

Storage Comment: LRRC16A Antibody (C-term) can be refrigerated at 2-8 °C for up to 6 months. For long term storage, keep at -20 °C.

Expiry Date: 6 months



### Western Blotting

**Image 1.** LRRC16A Antibody (C-term) (ABIN1536667 and ABIN2849731) western blot analysis in mouse stomach tissue lysates (35 µg/lane). This demonstrates the LRRC16A antibody detected the LRRC16A protein (arrow).