

Datasheet for ABIN1536668
anti-ITGA2 antibody (C-Term)[Go to Product page](#)

2 Images

Overview

Quantity:	400 µL
Target:	ITGA2
Binding Specificity:	AA 1152-1180, C-Term
Reactivity:	Human, Mouse
Host:	Rabbit
Clonality:	Polyclonal
Conjugate:	This ITGA2 antibody is un-conjugated
Application:	Western Blotting (WB)

Product Details

Immunogen:	This ITGA2 antibody is generated from rabbits immunized with a KLH conjugated synthetic peptide between 1152-1180 amino acids from the C-terminal region of human ITGA2.
Clone:	RB30398
Isotype:	Ig Fraction
Purification:	This antibody is purified through a protein A column, followed by peptide affinity purification.

Target Details

Target:	ITGA2
Alternative Name:	ITGA2 (ITGA2 Products)
Background:	This gene product belongs to the integrin alpha chain family. Integrins are heterodimeric

Target Details

integral membrane glycoproteins composed of a distinct alpha chain and a common beta chain. They are found on a wide variety of cell types including, T cells, fibroblasts and platelets. Integrins are involved in cell adhesion and also participate in cell-surface mediated signalling. [provided by RefSeq].

Molecular Weight: 129295

Gene ID: 3673

NCBI Accession: [NP_002194](#)

UniProt: [P17301](#)

Pathways: [CXCR4-mediated Signaling Events](#), [Smooth Muscle Cell Migration](#), [Integrin Complex](#)

Application Details

Application Notes: WB: 1:1000. WB: 1:1000

Restrictions: For Research Use only

Handling

Format: Liquid

Buffer: Purified polyclonal antibody supplied in PBS with 0.09 % (W/V) sodium azide.

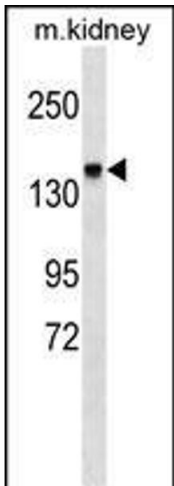
Preservative: Sodium azide

Precaution of Use: This product contains Sodium azide: a POISONOUS AND HAZARDOUS SUBSTANCE which should be handled by trained staff only.

Storage: 4 °C,-20 °C

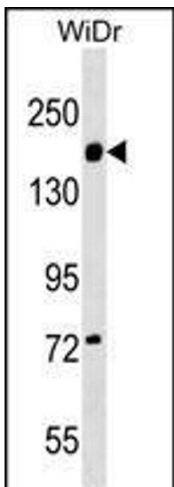
Storage Comment: ITGA2 Antibody (C-term) can be refrigerated at 2-8 °C for up to 6 months. For long term storage, keep at -20 °C.

Expiry Date: 6 months



Western Blotting

Image 1. ITGA2 Antibody (C-term) (ABIN1536668 and ABIN2849419) western blot analysis in mouse kidney tissue lysates (35 µg/lane). This demonstrates the ITGA2 antibody detected the ITGA2 protein (arrow).



Western Blotting

Image 2. ITGA2 Antibody (C-term) (ABIN1536668 and ABIN2849419) western blot analysis in WiDr cell line lysates (35 µg/lane). This demonstrates the ITGA2 antibody detected the ITGA2 protein (arrow).