

Datasheet for ABIN1536674
anti-PLAC1 antibody (C-Term)[Go to Product page](#)

1 Image

Overview

Quantity:	400 µL
Target:	PLAC1
Binding Specificity:	AA 116-145, C-Term
Reactivity:	Human
Host:	Rabbit
Clonality:	Polyclonal
Conjugate:	This PLAC1 antibody is un-conjugated
Application:	Western Blotting (WB)

Product Details

Immunogen:	This PLAC1 antibody is generated from rabbits immunized with a KLH conjugated synthetic peptide between 116-145 amino acids from the C-terminal region of human PLAC1.
Clone:	RB40197
Isotype:	Ig Fraction
Purification:	This antibody is purified through a protein A column, followed by peptide affinity purification.

Target Details

Target:	PLAC1
Alternative Name:	PLAC1 (PLAC1 Products)
Background:	PLAC1 may play a role in placental development.

Target Details

Molecular Weight:	23616
Gene ID:	10761
NCBI Accession:	NP_068568
UniProt:	Q9HBJ0

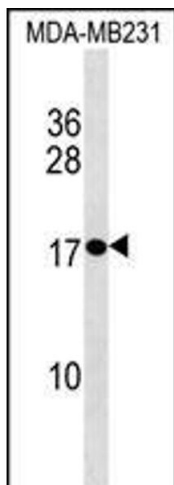
Application Details

Application Notes:	WB: 1:1000
Restrictions:	For Research Use only

Handling

Format:	Liquid
Buffer:	Purified polyclonal antibody supplied in PBS with 0.09 % (W/V) sodium azide.
Preservative:	Sodium azide
Precaution of Use:	This product contains Sodium azide: a POISONOUS AND HAZARDOUS SUBSTANCE which should be handled by trained staff only.
Storage:	4 °C,-20 °C
Storage Comment:	PLAC1 Antibody (C-term) can be refrigerated at 2-8 °C for up to 6 months. For long term storage, keep at -20 °C.
Expiry Date:	6 months

Images



Western Blotting

Image 1. PLAC1 Antibody (C-term) (ABIN1536674 and ABIN2838318) western blot analysis in MDA-M cell line lysates (35 µg/lane). This demonstrates the PLAC1 antibody detected the PLAC1 protein (arrow).