

Datasheet for ABIN1536679
anti-AF4 antibody (C-Term)[Go to Product page](#)

1 Image

Overview

Quantity:	400 µL
Target:	AF4 (AFF1)
Binding Specificity:	AA 1181-1210, C-Term
Reactivity:	Human
Host:	Rabbit
Clonality:	Polyclonal
Application:	Western Blotting (WB)

Product Details

Immunogen:	This MLLT2 antibody is generated from rabbits immunized with a KLH conjugated synthetic peptide between 1181-1210 amino acids from the C-terminal region of human MLLT2.
Clone:	RB38906
Isotype:	Ig Fraction
Purification:	This antibody is purified through a protein A column, followed by peptide affinity purification.

Target Details

Target:	AF4 (AFF1)
Alternative Name:	MLLT2 (AFF1 Products)
Background:	AFF1 belongs to the AF4 family.
Molecular Weight:	131422

Target Details

Gene ID:	4299
NCBI Accession:	NP_001160165 , NP_005926
UniProt:	P51825

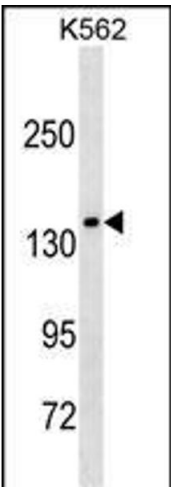
Application Details

Application Notes:	WB: 1:1000
Restrictions:	For Research Use only

Handling

Format:	Liquid
Buffer:	Purified polyclonal antibody supplied in PBS with 0.09 % (W/V) sodium azide.
Preservative:	Sodium azide
Precaution of Use:	This product contains Sodium azide: a POISONOUS AND HAZARDOUS SUBSTANCE which should be handled by trained staff only.
Storage:	4 °C,-20 °C
Storage Comment:	MLLT2 Antibody (C-term T1196) can be refrigerated at 2-8 °C for up to 6 months. For long term storage, keep at -20 °C.
Expiry Date:	6 months

Images



Western Blotting

Image 1. MLLT2 Antibody (C-term) (ABIN1536679 and ABIN2850041) western blot analysis in K562 cell line lysates (35 µg/lane). This demonstrates the MLLT2 antibody detected the MLLT2 protein (arrow).