



[Go to Product page](#)

Datasheet for ABIN1536687
anti-RNASE2 antibody (C-Term)

1 Image

Overview

Quantity:	400 µL
Target:	RNASE2
Binding Specificity:	AA 124-152, C-Term
Reactivity:	Human
Host:	Rabbit
Clonality:	Polyclonal
Conjugate:	This RNASE2 antibody is un-conjugated
Application:	Western Blotting (WB)

Product Details

Immunogen:	This RNASE2 antibody is generated from rabbits immunized with a KLH conjugated synthetic peptide between 124-152 amino acids from the C-terminal region of human RNASE2.
Clone:	RB39471
Isotype:	Ig Fraction
Purification:	This antibody is purified through a protein A column, followed by peptide affinity purification.

Target Details

Target:	RNASE2
Alternative Name:	RNASE2 (RNASE2 Products)
Background:	This is a non-secretory ribonuclease. It is a pyrimidine specific nuclease with a slight preference

Target Details

for U. Cytotoxin and helminthotoxin. Selectively chemotactic for dendritic cells. Possesses a wide variety of biological activities.

Molecular Weight: 18354

Gene ID: 6036

NCBI Accession: [NP_002925](#)

UniProt: [P10153](#)

Application Details

Application Notes: WB: 1:1000

Restrictions: For Research Use only

Handling

Format: Liquid

Buffer: Purified polyclonal antibody supplied in PBS with 0.09 % (W/V) sodium azide.

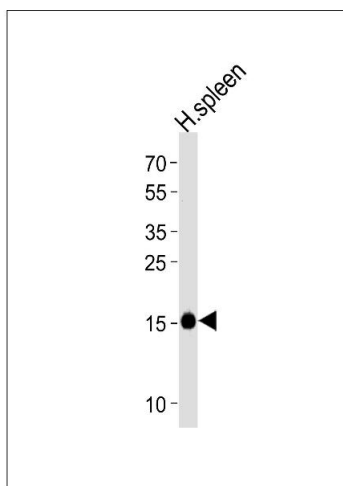
Preservative: Sodium azide

Precaution of Use: This product contains Sodium azide: a POISONOUS AND HAZARDOUS SUBSTANCE which should be handled by trained staff only.

Storage: 4 °C,-20 °C

Storage Comment: RNASE2 Antibody (C-term) can be refrigerated at 2-8 °C for up to 6 months. For long term storage, keep at -20 °C.

Expiry Date: 6 months



Western Blotting

Image 1. Western blot analysis of lysate from human spleen tissue lysate, using RNASE2 Antibody (C-term) (ABIN1536687 and ABIN2850388). (ABIN1536687 and ABIN2850388) was diluted at 1:1000 at each lane. A goat anti-rabbit IgG H&L(HRP) at 1:5000 dilution was used as the secondary antibody. Lysate at 35 µg per lane.