

Datasheet for ABIN1536693
anti-UBE2G1 antibody (C-Term)[Go to Product page](#)

2 Images

Overview

Quantity:	400 µL
Target:	UBE2G1 (Ube2g1)
Binding Specificity:	AA 127-155, C-Term
Reactivity:	Human
Host:	Rabbit
Clonality:	Polyclonal
Conjugate:	This UBE2G1 antibody is un-conjugated
Application:	Western Blotting (WB)

Product Details

Immunogen:	This UBE2G1 antibody is generated from rabbits immunized with a KLH conjugated synthetic peptide between 127-155 amino acids from the C-terminal region of human UBE2G1.
Clone:	RB36399
Isotype:	Ig Fraction
Predicted Reactivity:	Pr, M, Rat
Purification:	This antibody is purified through a protein A column, followed by peptide affinity purification.

Target Details

Target:	UBE2G1 (Ube2g1)
Alternative Name:	UBE2G1 (Ube2g1 Products)

Target Details

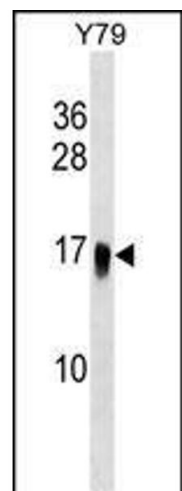
Background:	The modification of proteins with ubiquitin is an important cellular mechanism for targeting abnormal or short-lived proteins for degradation. Ubiquitination involves at least three classes of enzymes: ubiquitin-activating enzymes, or E1s, ubiquitin-conjugating enzymes, or E2s, and ubiquitin-protein ligases, or E3s. This gene encodes a member of the E2 ubiquitin-conjugating enzyme family and catalyzes the covalent attachment of ubiquitin to other proteins. The protein may be involved in degradation of muscle-specific proteins. [provided by RefSeq].
Molecular Weight:	19509
Gene ID:	7326
NCBI Accession:	NP_003333
UniProt:	P62253

Application Details

Application Notes:	WB: 1:1000. WB: 1:1000
Restrictions:	For Research Use only

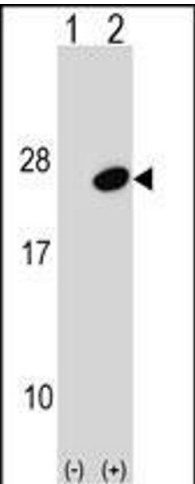
Handling

Format:	Liquid
Buffer:	Purified polyclonal antibody supplied in PBS with 0.09 % (W/V) sodium azide.
Preservative:	Sodium azide
Precaution of Use:	This product contains Sodium azide: a POISONOUS AND HAZARDOUS SUBSTANCE which should be handled by trained staff only.
Storage:	4 °C, -20 °C
Storage Comment:	UBE2G1 Antibody (C-term) can be refrigerated at 2-8 °C for up to 6 months. For long term storage, keep at -20 °C.
Expiry Date:	6 months



Western Blotting

Image 1. UBE2G1 Antibody (C-term) (ABIN1536693 and ABIN2848805) western blot analysis in Y79 cell line lysates (35 µg/lane). This demonstrates the UBE2G1 antibody detected the UBE2G1 protein (arrow).



Western Blotting

Image 2. Western blot analysis of UBE2G1 (arrow) using rabbit polyclonal UBE2G1 Antibody (C-term) (ABIN1536693 and ABIN2848805). 293 cell lysates (2 µg/lane) either nontransfected (Lane 1) or transiently transfected (Lane 2) with the UBE2G1 gene.