

Datasheet for ABIN1536702
anti-MTHFS antibody (C-Term)[Go to Product page](#)

1 Image

Overview

Quantity:	400 µL
Target:	MTHFS
Binding Specificity:	AA 133-159, C-Term
Reactivity:	Human, Mouse
Host:	Rabbit
Clonality:	Polyclonal
Conjugate:	This MTHFS antibody is un-conjugated
Application:	Western Blotting (WB)

Product Details

Immunogen:	This MTHFS antibody is generated from rabbits immunized with a KLH conjugated synthetic peptide between 133-159 amino acids from the C-terminal region of human MTHFS.
Clone:	RB38601
Isotype:	Ig Fraction
Purification:	This antibody is purified through a protein A column, followed by peptide affinity purification.

Target Details

Target:	MTHFS
Alternative Name:	MTHFS (MTHFS Products)
Background:	MTHFS contributes to tetrahydrofolate metabolism. Helps regulate carbon flow through the

Target Details

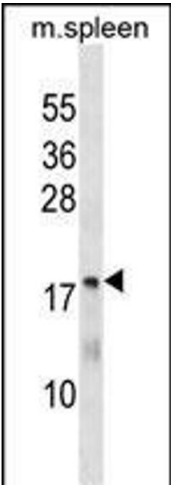
	folate-dependent one-carbon metabolic network that supplies carbon for the biosynthesis of purines, thymidine and amino acids.
Molecular Weight:	23256
Gene ID:	10588
NCBI Accession:	NP_001186687 , NP_001186689 , NP_006432
UniProt:	P49914

Application Details

Application Notes:	WB: 1:1000
Restrictions:	For Research Use only

Handling

Format:	Liquid
Buffer:	Purified polyclonal antibody supplied in PBS with 0.09 % (W/V) sodium azide.
Preservative:	Sodium azide
Precaution of Use:	This product contains Sodium azide: a POISONOUS AND HAZARDOUS SUBSTANCE which should be handled by trained staff only.
Storage:	4 °C,-20 °C
Storage Comment:	MTHFS Antibody (C-term) can be refrigerated at 2-8 °C for up to 6 months. For long term storage, keep at -20 °C.
Expiry Date:	6 months



Western Blotting

Image 1. MTHFS Antibody (C-term) (ABIN1536702 and ABIN2850070) western blot analysis in mouse spleen tissue lysates (35 µg/lane). This demonstrates the MTHFS antibody detected the MTHFS protein (arrow).