

Datasheet for ABIN1536703  
**anti-RRBP1 antibody (C-Term)**[Go to Product page](#)

## 1 Image

## Overview

Quantity:	400 µL
Target:	RRBP1
Binding Specificity:	AA 1327-1355, C-Term
Reactivity:	Human
Host:	Rabbit
Clonality:	Polyclonal
Conjugate:	This RRBP1 antibody is un-conjugated
Application:	Western Blotting (WB)

## Product Details

Immunogen:	This RRBP1 antibody is generated from rabbits immunized with a KLH conjugated synthetic peptide between 1327-1355 amino acids from the C-terminal region of human RRBP1.
Clone:	RB23460
Isotype:	Ig Fraction
Purification:	This antibody is purified through a protein A column, followed by peptide affinity purification.

## Target Details

Target:	RRBP1
Alternative Name:	RRBP1 ( <a href="#">RRBP1 Products</a> )
Background:	Analysis of cDNA clones indicates that ribosome binding protein 1 may exist in different forms

## Target Details

due to removal of tandem repeats, or partial intraexonic splicing of RRBP1. The form presented here is lacking the canine p180 ribosome-binding domain, NQGKKAEGAQ, which is tandemly repeated close to the N-terminus in other forms that haven't been fully characterized. RRBP1 has been excluded as a candidate gene in the cause of Alagille syndrome. Alternate splicing results in multiple transcript variants.

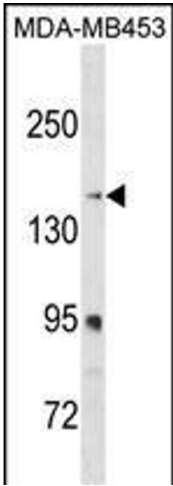
Molecular Weight:	152456
Gene ID:	6238
NCBI Accession:	<a href="#">NP_001036041</a> , <a href="#">NP_004578</a>
UniProt:	<a href="#">Q9P2E9</a>

## Application Details

Application Notes:	WB: 1:1000
Restrictions:	For Research Use only

## Handling

Format:	Liquid
Buffer:	Purified polyclonal antibody supplied in PBS with 0.09 % (W/V) sodium azide.
Preservative:	Sodium azide
Precaution of Use:	This product contains Sodium azide: a POISONOUS AND HAZARDOUS SUBSTANCE which should be handled by trained staff only.
Storage:	4 °C,-20 °C
Storage Comment:	RRBP1 Antibody (C-term) can be refrigerated at 2-8 °C for up to 6 months. For long term storage, keep at -20 °C.
Expiry Date:	6 months



Western Blotting

**Image 1.** RRBP1 Antibody (C-term) (ABIN1536703 and ABIN2849945) western blot analysis in MDA-M cell line lysates (35 µg/lane). This demonstrates the RRBP1 antibody detected the RRBP1 protein (arrow).