

Datasheet for ABIN1536707
anti-BCL7B antibody (C-Term)[Go to Product page](#)

3 Images

Overview

Quantity:	400 µL
Target:	BCL7B
Binding Specificity:	AA 137-164, C-Term
Reactivity:	Human, Mouse
Host:	Rabbit
Clonality:	Polyclonal
Conjugate:	This BCL7B antibody is un-conjugated
Application:	Western Blotting (WB), Immunohistochemistry (Paraffin-embedded Sections) (IHC (p))

Product Details

Immunogen:	This BCL7B antibody is generated from rabbits immunized with a KLH conjugated synthetic peptide between 137-164 amino acids from the C-terminal region of human BCL7B.
Clone:	RB36546
Isotype:	Ig Fraction
Predicted Reactivity:	B
Purification:	This antibody is purified through a protein A column, followed by peptide affinity purification.

Target Details

Target:	BCL7B
Alternative Name:	BCL7B (BCL7B Products)

Target Details

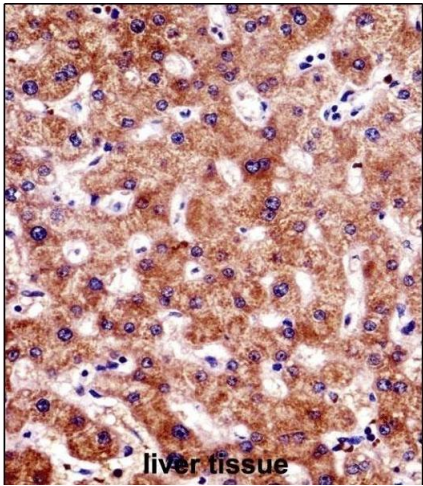
Background:	<p>This gene encodes a member of the BCL7 family including BCL7A, BCL7B and BCL7C proteins. This member is BCL7B, which contains a region that is highly similar to the N-terminal segment of BCL7A or BCL7C proteins. The BCL7A protein is encoded by the gene known to be directly involved in a three-way gene translocation in a Burkitt lymphoma cell line. This gene is located at a chromosomal region commonly deleted in Williams syndrome. This gene is highly conserved from C. elegans to human. Multiple alternatively spliced transcript variants have been found for this gene.</p>
Molecular Weight:	22195
Gene ID:	9275
NCBI Accession:	NP_001184173 , NP_001698
UniProt:	Q9BQE9

Application Details

Application Notes:	WB: 1:1000. WB: 1:1000. IHC-P: 1:10~50
Restrictions:	For Research Use only

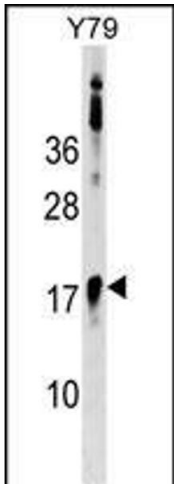
Handling

Format:	Liquid
Buffer:	Purified polyclonal antibody supplied in PBS with 0.09 % (W/V) sodium azide.
Preservative:	Sodium azide
Precaution of Use:	This product contains Sodium azide: a POISONOUS AND HAZARDOUS SUBSTANCE which should be handled by trained staff only.
Storage:	4 °C, -20 °C
Storage Comment:	BCL7B Antibody (C-term) can be refrigerated at 2-8 °C for up to 6 months. For long term storage, keep at -20 °C.
Expiry Date:	6 months



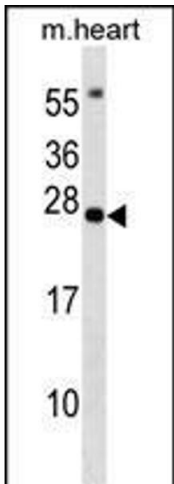
Immunohistochemistry (Paraffin-embedded Sections)

Image 1. BCL7B Antibody (C-term) ((ABIN1536707 and ABIN2848811))immunohistochemistry analysis in formalin fixed and paraffin embedded human liver tissue followed by peroxidase conjugation of the secondary antibody and DAB staining.This data demonstrates the use of BCL7B Antibody (C-term) for immunohistochemistry. Clinical relevance has not been evaluated.



Western Blotting

Image 2. BCL7B Antibody (C-term) (ABIN1536707 and ABIN2848811) western blot analysis in Y79 cell line lysates (35 µg/lane).This demonstrates the BCL7B antibody detected the BCL7B protein (arrow).



Western Blotting

Image 3. BCL7B Antibody (C-term) (ABIN1536707 and ABIN2848811) western blot analysis in mouse heart tissue lysates (35 µg/lane).This demonstrates the BCL7B antibody detected the BCL7B protein (arrow).