



[Go to Product page](#)

Datasheet for ABIN1536710
anti-FGF20 antibody (C-Term)

1 Image

Overview

Quantity:	400 µL
Target:	FGF20
Binding Specificity:	AA 136-165, C-Term
Reactivity:	Mouse
Host:	Rabbit
Clonality:	Polyclonal
Conjugate:	This FGF20 antibody is un-conjugated
Application:	Western Blotting (WB)

Product Details

Immunogen:	This FGF20 antibody is generated from rabbits immunized with a KLH conjugated synthetic peptide between 136-165 amino acids from the C-terminal region of human FGF20.
Clone:	RB40157
Isotype:	Ig Fraction
Predicted Reactivity:	Rat
Purification:	This antibody is purified through a protein A column, followed by peptide affinity purification.

Target Details

Target:	FGF20
Alternative Name:	FGF20 (FGF20 Products)

Target Details

Background: The protein encoded by this gene is a member of the fibroblast growth factor family. The fibroblast growth factors possess broad mitogenic and cell survival activities, and are involved in a variety of biological processes including embryonic development, cell growth, morphogenesis, tissue repair, tumor growth and invasion. This gene product is a secreted neurotrophic factor but lacks a typical signal peptide. It is expressed in normal brain, particularly the cerebellum, and may regulate central nervous system development and function. Homodimerization of this protein was shown to regulate its receptor binding activity and concentration gradient in the extracellular matrix. Genetic variations of this gene have been associated with Parkinson disease susceptibility.

Molecular Weight: 23499

Gene ID: 26281

NCBI Accession: [NP_062825](#)

UniProt: [Q9NP95](#)

Pathways: [Fc-epsilon Receptor Signaling Pathway](#), [EGFR Signaling Pathway](#), [Neurotrophin Signaling Pathway](#)

Application Details

Application Notes: WB: 1:1000

Restrictions: For Research Use only

Handling

Format: Liquid

Buffer: Purified polyclonal antibody supplied in PBS with 0.09 % (W/V) sodium azide.

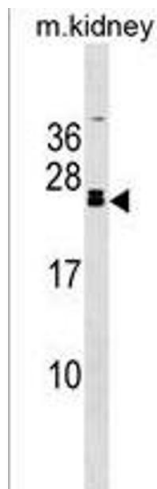
Preservative: Sodium azide

Precaution of Use: This product contains Sodium azide: a POISONOUS AND HAZARDOUS SUBSTANCE which should be handled by trained staff only.

Storage: 4 °C,-20 °C

Storage Comment: FGF20 Antibody (C-term) can be refrigerated at 2-8 °C for up to 6 months. For long term storage, keep at -20 °C.

Expiry Date: 6 months



Western Blotting

Image 1. FGF20 Antibody (C-term) (ABIN1536710 and ABIN2838307) western blot analysis in mouse kidney tissue lysates (35 µg/lane). This demonstrates the FGF20 antibody detected the FGF20 protein (arrow).