



[Go to Product page](#)

Datasheet for ABIN1536712  
**anti-KIF27 antibody (C-Term)**

1 Image

Overview

Quantity:	400 µL
Target:	KIF27
Binding Specificity:	AA 1372-1401, C-Term
Reactivity:	Human
Host:	Rabbit
Clonality:	Polyclonal
Conjugate:	This KIF27 antibody is un-conjugated
Application:	Western Blotting (WB)

Product Details

Immunogen:	This KIF27 antibody is generated from rabbits immunized with a KLH conjugated synthetic peptide between 1372-1401 amino acids from the C-terminal region of human KIF27.
Clone:	RB39788
Isotype:	Ig Fraction
Purification:	This antibody is purified through a protein A column, followed by peptide affinity purification.

Target Details

Target:	KIF27
Alternative Name:	KIF27 ( <a href="#">KIF27 Products</a> )
Background:	KIF27 plays an essential role in motile ciliogenesis.

## Target Details

Molecular Weight:	160283
Gene ID:	55582
NCBI Accession:	<a href="#">NP_001258856</a> , <a href="#">NP_001258857</a> , <a href="#">NP_060046</a>
UniProt:	<a href="#">Q86VH2</a>

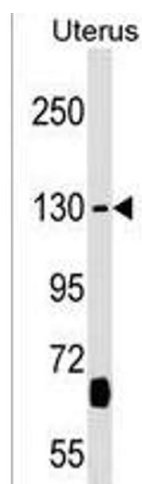
## Application Details

Application Notes:	WB: 1:1000
Restrictions:	For Research Use only

## Handling

Format:	Liquid
Buffer:	Purified polyclonal antibody supplied in PBS with 0.09 % (W/V) sodium azide.
Preservative:	Sodium azide
Precaution of Use:	This product contains Sodium azide: a POISONOUS AND HAZARDOUS SUBSTANCE which should be handled by trained staff only.
Storage:	4 °C, -20 °C
Storage Comment:	KIF27 Antibody (C-term) can be refrigerated at 2-8 °C for up to 6 months. For long term storage, keep at -20 °C.
Expiry Date:	6 months

## Images



### Western Blotting

**Image 1.** KIF27 Antibody (C-term) (ABIN1536712 and ABIN2838099) western blot analysis in Uterus tissue lysates (35 µg/lane). This demonstrates the KIF27 antibody detected the KIF27 protein (arrow).