

Datasheet for ABIN1536713
anti-Relaxin 2 antibody (C-Term)[Go to Product page](#)

1 Image

Overview

Quantity:	400 µL
Target:	Relaxin 2 (RLN2)
Binding Specificity:	AA 139-165, C-Term
Reactivity:	Human
Host:	Rabbit
Clonality:	Polyclonal
Conjugate:	This Relaxin 2 antibody is un-conjugated
Application:	Western Blotting (WB)

Product Details

Immunogen:	This RLN2 antibody is generated from rabbits immunized with a KLH conjugated synthetic peptide between 139-165 amino acids from the C-terminal region of human RLN2.
Clone:	RB39661
Isotype:	Ig Fraction
Purification:	This antibody is purified through a protein A column, followed by peptide affinity purification.

Target Details

Target:	Relaxin 2 (RLN2)
Alternative Name:	RLN2 (RLN2 Products)
Background:	Relaxins are known endocrine and autocrine/paracrine hormones, belonging to the insulin gene

Target Details

superfamily. In the human there are three non-allelic relaxin genes, RLN1, RLN2 and RLN3. RLN1 and RLN2 share high sequence homology. The active form of the encoded protein consists of an A chain and a B chain but their cleavage sites are not definitely described yet. Relaxin is produced by the ovary, and targets the mammalian reproductive system to ripen the cervix, elongate the pubic symphysis and inhibit uterine contraction. It may have additional roles in enhancing sperm motility, regulating blood pressure, controlling heart rate and releasing oxytocin and vasopressin. There are two alternatively spliced transcript variants encoding different isoforms described for this gene.

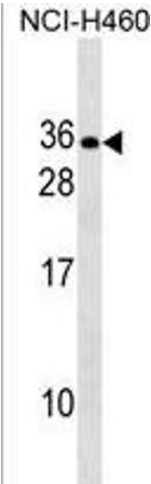
Molecular Weight:	21043
Gene ID:	6019
NCBI Accession:	NP_005050 , NP_604390
UniProt:	P04090
Pathways:	Hormone Activity

Application Details

Application Notes:	WB: 1:1000
Restrictions:	For Research Use only

Handling

Format:	Liquid
Buffer:	Purified polyclonal antibody supplied in PBS with 0.09 % (W/V) sodium azide.
Preservative:	Sodium azide
Precaution of Use:	This product contains Sodium azide: a POISONOUS AND HAZARDOUS SUBSTANCE which should be handled by trained staff only.
Storage:	4 °C, -20 °C
Storage Comment:	RLN2 Antibody (C-term) can be refrigerated at 2-8 °C for up to 6 months. For long term storage, keep at -20 °C.
Expiry Date:	6 months



Western Blotting

Image 1. RLN2 Antibody (C-term) (ABIN1536713 and ABIN2838201) western blot analysis in NCI- cell line lysates (35 µg/lane). This demonstrates the RLN2 antibody detected the RLN2 protein (arrow).