

Datasheet for ABIN1536716
anti-PTP4A1 antibody (C-Term)[Go to Product page](#)

2 Images

Overview

Quantity:	400 µL
Target:	PTP4A1
Binding Specificity:	AA 140-168, C-Term
Reactivity:	Human, Mouse
Host:	Rabbit
Clonality:	Polyclonal
Conjugate:	This PTP4A1 antibody is un-conjugated
Application:	Western Blotting (WB)

Product Details

Immunogen:	This PTP4A1 antibody is generated from rabbits immunized with a KLH conjugated synthetic peptide between 140-168 amino acids from the C-terminal region of human PTP4A1.
Clone:	RB36258
Isotype:	Ig Fraction
Predicted Reactivity:	Pr, Rat
Purification:	This antibody is purified through a protein A column, followed by peptide affinity purification.

Target Details

Target:	PTP4A1
Alternative Name:	PTP4A1 (PTP4A1 Products)

Target Details

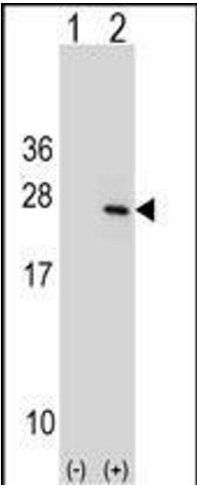
Background:	The protein encoded by this gene belongs to a small class of prenylated protein tyrosine phosphatases (PTPs), which contains a PTP domain and a characteristic C-terminal prenylation motif. PTPs are cell signaling molecules that play regulatory roles in a variety of cellular processes. This tyrosine phosphatase is a nuclear protein, but may primarily associate with plasma membrane. The surface membrane association of this protein depends on its C-terminal prenylation. Overexpression of this gene in mammalian cells conferred a transformed phenotype, which implicated its role in the tumorigenesis. Studies in rat suggested that this gene may be an immediate-early gene in mitogen-stimulated cells. [provided by RefSeq].
Molecular Weight:	19815
Gene ID:	7803
NCBI Accession:	NP_003454
UniProt:	Q93096

Application Details

Application Notes:	WB: 1:1000. WB: 1:1000
Restrictions:	For Research Use only

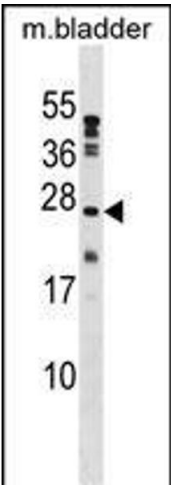
Handling

Format:	Liquid
Buffer:	Purified polyclonal antibody supplied in PBS with 0.09 % (W/V) sodium azide.
Preservative:	Sodium azide
Precaution of Use:	This product contains Sodium azide: a POISONOUS AND HAZARDOUS SUBSTANCE which should be handled by trained staff only.
Storage:	4 °C,-20 °C
Storage Comment:	PTP4A1 Antibody (C-term) can be refrigerated at 2-8 °C for up to 6 months. For long term storage, keep at -20 °C.
Expiry Date:	6 months



Western Blotting

Image 1. Western blot analysis of PTP4A1 (arrow) using rabbit polyclonal PTP4A1 Antibody (C-term) (ABIN1536716 and ABIN2848589). 293 cell lysates (2 µg/lane) either nontransfected (Lane 1) or transiently transfected (Lane 2) with the PTP4A1 gene.



Western Blotting

Image 2. PTP4A1 Antibody (C-term) (ABIN1536716 and ABIN2848589) western blot analysis in mouse bladder tissue lysates (35 µg/lane). This demonstrates the PTP4A1 antibody detected the PTP4A1 protein (arrow).