

## Datasheet for ABIN1536717 **anti-ASF1A antibody (C-Term)**



[Go to Product page](#)

### 1 Image

#### Overview

Quantity:	400 µL
Target:	ASF1A
Binding Specificity:	AA 140-168, C-Term
Reactivity:	Human
Host:	Rabbit
Clonality:	Polyclonal
Conjugate:	This ASF1A antibody is un-conjugated
Application:	Western Blotting (WB)

#### Product Details

Immunogen:	This ASF1A antibody is generated from rabbits immunized with a KLH conjugated synthetic peptide between 140-168 amino acids from the C-terminal region of human ASF1A.
Clone:	RB36736
Isotype:	Ig Fraction
Predicted Reactivity:	B, M, C
Purification:	This antibody is purified through a protein A column, followed by peptide affinity purification.

#### Target Details

Target:	ASF1A
Alternative Name:	ASF1A ( <a href="#">ASF1A Products</a> )

## Target Details

---

Background:	This gene encodes a member of the H3/H4 family of histone chaperone proteins and is similar to the anti-silencing function-1 gene in yeast. The protein is a key component of a histone donor complex that functions in nucleosome assembly. It interacts with histones H3 and H4, and functions together with a chromatin assembly factor during DNA replication and repair. [provided by RefSeq].
Molecular Weight:	22969
Gene ID:	25842
NCBI Accession:	<a href="#">NP_054753</a>
UniProt:	<a href="#">Q9Y294</a>

## Application Details

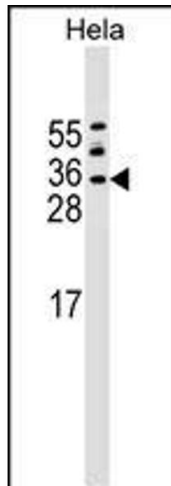
---

Application Notes:	WB: 1:1000
Restrictions:	For Research Use only

## Handling

---

Format:	Liquid
Buffer:	Purified polyclonal antibody supplied in PBS with 0.09 % (W/V) sodium azide.
Preservative:	Sodium azide
Precaution of Use:	This product contains Sodium azide: a POISONOUS AND HAZARDOUS SUBSTANCE which should be handled by trained staff only.
Storage:	4 °C,-20 °C
Storage Comment:	ASF1A Antibody (C-term) can be refrigerated at 2-8 °C for up to 6 months. For long term storage, keep at -20 °C.
Expiry Date:	6 months



### Western Blotting

**Image 1.** ASF1A Antibody (C-term) (ABIN1536717 and ABIN2848834) western blot analysis in HeLa cell line lysates (35 µg/lane). This demonstrates the ASF1A antibody detected the ASF1A protein (arrow).