

Datasheet for ABIN1536720
anti-RREB1 antibody (C-Term)[Go to Product page](#)

1 Image

Overview

| | |
|----------------------|--------------------------------------|
| Quantity: | 400 µL |
| Target: | RREB1 |
| Binding Specificity: | AA 1398-1424, C-Term |
| Reactivity: | Human |
| Host: | Rabbit |
| Clonality: | Polyclonal |
| Conjugate: | This RREB1 antibody is un-conjugated |
| Application: | Western Blotting (WB) |

Product Details

| | |
|---------------|--|
| Immunogen: | This RREB1 antibody is generated from rabbits immunized with a KLH conjugated synthetic peptide between 1398-1424 amino acids from the C-terminal region of human RREB1. |
| Clone: | RB39783 |
| Isotype: | Ig Fraction |
| Purification: | This antibody is purified through a protein A column, followed by peptide affinity purification. |

Target Details

| | |
|-------------------|---|
| Target: | RREB1 |
| Alternative Name: | RREB1 (RREB1 Products) |
| Background: | The protein encoded by this gene is a zinc finger transcription factor that binds to RAS- |

Target Details

responsive elements (RREs) of gene promoters. It has been shown that the calcitonin gene promoter contains an RRE and that the encoded protein binds there and increases expression of calcitonin, which may be involved in Ras/Raf-mediated cell differentiation. Multiple transcript variants encoding several different isoforms have been found for this gene.

Molecular Weight: 181420

Gene ID: 6239

NCBI Accession: [NP_001003698](#), [NP_001003699](#), [NP_001003700](#), [NP_001161816](#)

UniProt: [Q92766](#)

Application Details

Application Notes: WB: 1:1000

Restrictions: For Research Use only

Handling

Format: Liquid

Buffer: Purified polyclonal antibody supplied in PBS with 0.09 % (W/V) sodium azide.

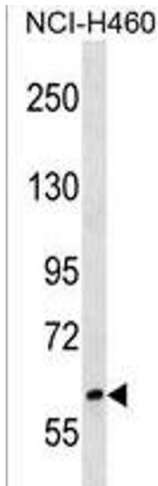
Preservative: Sodium azide

Precaution of Use: This product contains Sodium azide: a POISONOUS AND HAZARDOUS SUBSTANCE which should be handled by trained staff only.

Storage: 4 °C, -20 °C

Storage Comment: RREB1 Antibody (C-term) can be refrigerated at 2-8 °C for up to 6 months. For long term storage, keep at -20 °C.

Expiry Date: 6 months



Western Blotting

Image 1. RREB1 Antibody (C-term) (ABIN1536720 and ABIN2850419) western blot analysis in NCI- cell line lysates (35 µg/lane). This demonstrates the RREB1 antibody detected the RREB1 protein (arrow).