

Datasheet for ABIN1536725  
**anti-POLR1A antibody (C-Term)**[Go to Product page](#)

## 1 Image

## Overview

Quantity:	400 µL
Target:	POLR1A
Binding Specificity:	AA 1437-1465, C-Term
Reactivity:	Human
Host:	Rabbit
Clonality:	Polyclonal
Conjugate:	This POLR1A antibody is un-conjugated
Application:	Western Blotting (WB)

## Product Details

Immunogen:	This POLR1A antibody is generated from rabbits immunized with a KLH conjugated synthetic peptide between 1437-1465 amino acids from the C-terminal region of human POLR1A.
Clone:	RB39202
Isotype:	Ig Fraction
Purification:	This antibody is purified through a protein A column, followed by peptide affinity purification.

## Target Details

Target:	POLR1A
Alternative Name:	POLR1A ( <a href="#">POLR1A Products</a> )
Background:	DNA-dependent RNA polymerase catalyzes the transcription of DNA into RNA using the four

## Target Details

ribonucleoside triphosphates as substrates. Largest and catalytic core component of RNA polymerase I which synthesizes ribosomal RNA precursors. Forms the polymerase active center together with the second largest subunit. A single stranded DNA template strand of the promoter is positioned within the central active site cleft of Pol I. A bridging helix emanates from RPA1 and crosses the cleft near the catalytic site and is thought to promote translocation of Pol I by acting as a ratchet that moves the RNA-DNA hybrid through the active site by switching from straight to bent conformations at each step of nucleotide addition (By similarity).

Molecular Weight: 194811

Gene ID: 25885

NCBI Accession: [NP\\_056240](#)

UniProt: [O95602](#)

## Application Details

Application Notes: WB: 1:1000

Restrictions: For Research Use only

## Handling

Format: Liquid

Buffer: Purified polyclonal antibody supplied in PBS with 0.09 % (W/V) sodium azide.

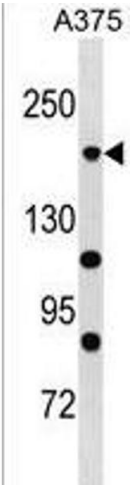
Preservative: Sodium azide

Precaution of Use: This product contains Sodium azide: a POISONOUS AND HAZARDOUS SUBSTANCE which should be handled by trained staff only.

Storage: 4 °C,-20 °C

Storage Comment: POLR1A Antibody (C-term) can be refrigerated at 2-8 °C for up to 6 months. For long term storage, keep at -20 °C.

Expiry Date: 6 months



Western Blotting

**Image 1.** POLR1A Antibody (C-term) (ABIN1536725 and ABIN2850362) western blot analysis in cell line lysates (35 µg/lane). This demonstrates the POLR1A antibody detected the POLR1A protein (arrow).