

Datasheet for ABIN1536737  
**anti-TTDN1 antibody (C-Term)**[Go to Product page](#)

## 1 Image

## Overview

Quantity:	400 µL
Target:	TTDN1 (MPLKIP)
Binding Specificity:	AA 151-177, C-Term
Reactivity:	Human
Host:	Rabbit
Clonality:	Polyclonal
Conjugate:	This TTDN1 antibody is un-conjugated
Application:	Western Blotting (WB)

## Product Details

Immunogen:	This TTDN1 antibody is generated from rabbits immunized with a KLH conjugated synthetic peptide between 151-177 amino acids from the C-terminal region of human TTDN1.
Clone:	RB37478
Isotype:	Ig Fraction
Predicted Reactivity:	M
Purification:	This antibody is purified through a protein A column, followed by peptide affinity purification.

## Target Details

Target:	TTDN1 (MPLKIP)
Alternative Name:	TTDN1 ( <a href="#">MPLKIP Products</a> )

## Target Details

**Background:** The protein encoded by this gene localizes to the centrosome during mitosis and to the midbody during cytokinesis. The protein is phosphorylated by cyclin-dependent kinase 1 during mitosis and subsequently interacts with polo-like kinase 1. The protein is thought to function in regulating mitosis and cytokinesis. Mutations in this gene result in nonphotosensitive trichothiodystrophy.

**Molecular Weight:** 19147

**Gene ID:** 136647

**NCBI Accession:** [NP\\_619646](#)

**UniProt:** [Q8TAP9](#)

## Application Details

**Application Notes:** WB: 1:1000

**Restrictions:** For Research Use only

## Handling

**Format:** Liquid

**Buffer:** Purified polyclonal antibody supplied in PBS with 0.09 % (W/V) sodium azide.

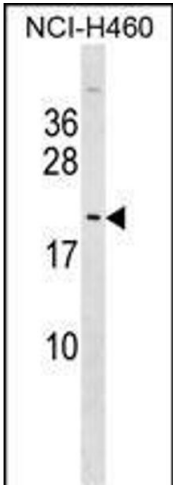
**Preservative:** Sodium azide

**Precaution of Use:** This product contains Sodium azide: a POISONOUS AND HAZARDOUS SUBSTANCE which should be handled by trained staff only.

**Storage:** 4 °C,-20 °C

**Storage Comment:** TTDN1 Antibody (C-term) can be refrigerated at 2-8 °C for up to 6 months. For long term storage, keep at -20 °C.

**Expiry Date:** 6 months



Western Blotting

**Image 1.** TTDN1 Antibody (C-term) (ABIN1536737 and ABIN2849170) western blot analysis in NCI- cell line lysates (35 µg/lane).This demonstrates the TTDN1 antibody detected the TTDN1 protein (arrow).