

Datasheet for ABIN1536751
anti-rala antibody (C-Term)[Go to Product page](#)

1 Image

Overview

Quantity:	400 µL
Target:	rala
Binding Specificity:	AA 158-186, C-Term
Reactivity:	Human
Host:	Rabbit
Clonality:	Polyclonal
Conjugate:	This rala antibody is un-conjugated
Application:	Western Blotting (WB)

Product Details

Immunogen:	This RALA antibody is generated from rabbits immunized with a KLH conjugated synthetic peptide between 158-186 amino acids from the C-terminal region of human RALA.
Clone:	RB39335
Isotype:	Ig Fraction
Predicted Reactivity:	M, Rat
Purification:	This antibody is purified through a protein A column, followed by peptide affinity purification.

Target Details

Target:	rala
Alternative Name:	RALA (rala Products)

Target Details

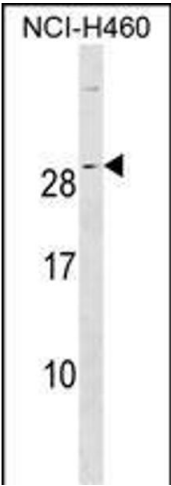
Background:	The product of this gene belongs to the small GTPase superfamily, Ras family of proteins. GTP-binding proteins mediate the transmembrane signaling initiated by the occupancy of certain cell surface receptors. This gene encodes a low molecular mass ras-like GTP-binding protein that shares about 50 % similarity with other ras proteins.
Molecular Weight:	23567
Gene ID:	5898
NCBI Accession:	NP_005393
UniProt:	P11233
Pathways:	Neurotrophin Signaling Pathway , SARS-CoV-2 Protein Interactome

Application Details

Application Notes:	WB: 1:1000
Restrictions:	For Research Use only

Handling

Format:	Liquid
Buffer:	Purified polyclonal antibody supplied in PBS with 0.09 % (W/V) sodium azide.
Preservative:	Sodium azide
Precaution of Use:	This product contains Sodium azide: a POISONOUS AND HAZARDOUS SUBSTANCE which should be handled by trained staff only.
Storage:	4 °C,-20 °C
Storage Comment:	RALA Antibody (C-term) can be refrigerated at 2-8 °C for up to 6 months. For long term storage, keep at -20 °C.
Expiry Date:	6 months



Western Blotting

Image 1. RALA Antibody (C-term) (ABIN1536751 and ABIN2850380) western blot analysis in NCI- cell line lysates (35 µg/lane). This demonstrates the RALA antibody detected the RALA protein (arrow).