



[Go to Product page](#)

Datasheet for ABIN1536753
anti-ISOC2 antibody (C-Term)

1 Image

Overview

Quantity:	400 µL
Target:	ISOC2
Binding Specificity:	AA 159-188, C-Term
Reactivity:	Human
Host:	Rabbit
Clonality:	Polyclonal
Conjugate:	This ISOC2 antibody is un-conjugated
Application:	Western Blotting (WB)

Product Details

Immunogen:	This ISOC2 antibody is generated from rabbits immunized with a KLH conjugated synthetic peptide between 159-188 amino acids from the C-terminal region of human ISOC2.
Clone:	RB38463
Isotype:	Ig Fraction
Predicted Reactivity:	Pr
Purification:	This antibody is purified through a protein A column, followed by peptide affinity purification.

Target Details

Target:	ISOC2
Alternative Name:	ISOC2 (ISOC2 Products)

Target Details

Background: ISOC2 belongs to the isochorismatase family.

Molecular Weight: 22337

Gene ID: 79763

NCBI Accession: [NP_001129673](#), [NP_001129674](#), [NP_078986](#)

UniProt: [Q96AB3](#)

Application Details

Application Notes: WB: 1:1000

Restrictions: For Research Use only

Handling

Format: Liquid

Buffer: Purified polyclonal antibody supplied in PBS with 0.09 % (W/V) sodium azide.

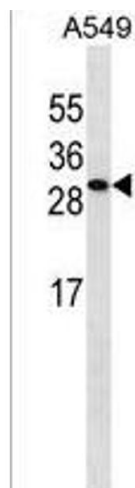
Preservative: Sodium azide

Precaution of Use: This product contains Sodium azide: a POISONOUS AND HAZARDOUS SUBSTANCE which should be handled by trained staff only.

Storage: 4 °C, -20 °C

Storage Comment: ISOC2 Antibody (C-term) can be refrigerated at 2-8 °C for up to 6 months. For long term storage, keep at -20 °C.

Expiry Date: 6 months



Western Blotting

Image 1. ISOC2 Antibody (C-term) (ABIN1536753 and ABIN2850006) western blot analysis in A549 cell line lysates (35 µg/lane). This demonstrates the ISOC2 antibody detected the ISOC2 protein (arrow).