



Datasheet for ABIN1536754
anti-LDOC1L antibody (C-Term)



[Go to Product page](#)

1 Image

Overview

Quantity:	400 µL
Target:	LDOC1L
Binding Specificity:	AA 160-186, C-Term
Reactivity:	Human, Mouse
Host:	Rabbit
Clonality:	Polyclonal
Conjugate:	This LDOC1L antibody is un-conjugated
Application:	Western Blotting (WB)

Product Details

Immunogen:	This LDOC1L antibody is generated from rabbits immunized with a KLH conjugated synthetic peptide between 160-186 amino acids from the C-terminal region of human LDOC1L.
Clone:	RB37706
Isotype:	Ig Fraction
Purification:	This antibody is purified through a protein A column, followed by peptide affinity purification.

Target Details

Target:	LDOC1L
Alternative Name:	LDOC1L (LDOC1L Products)
Background:	LDOC1 (Leucine zipper protein downregulated in cancer cells) is a 146 amino acid nuclear

Target Details

protein that contains a leucine zipper-like motif and a proline-rich region that shares marked similarity with an SH3-binding domain. The protein localizes to the nucleus and is downregulated in some cancer cell lines. It is thought to regulate the transcriptional response mediated by the nuclear factor kB (NF-kB). The gene has been proposed as a tumor suppressor gene whose protein product may have an important role in the development and/or progression of some cancers. LDOC1L (Leucine zipper protein down-regulated in cancer cells-like), also known as MART6 (Mammalian retrotransposon-derived protein 6), is a 239 amino acid protein that belongs to the LDOC1 family.

Molecular Weight: 26154

Gene ID: 84247

NCBI Accession: [NP_115663](#)

UniProt: [Q6ICC9](#)

Application Details

Application Notes: WB: 1:1000

Restrictions: For Research Use only

Handling

Format: Liquid

Buffer: Purified polyclonal antibody supplied in PBS with 0.09 % (W/V) sodium azide.

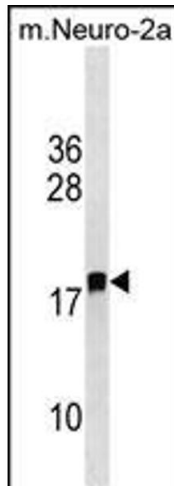
Preservative: Sodium azide

Precaution of Use: This product contains Sodium azide: a POISONOUS AND HAZARDOUS SUBSTANCE which should be handled by trained staff only.

Storage: 4 °C,-20 °C

Storage Comment: LDOC1L Antibody (C-term) can be refrigerated at 2-8 °C for up to 6 months. For long term storage, keep at -20 °C.

Expiry Date: 6 months



Western Blotting

Image 1. LDOC1L Antibody (C-term) (ABIN1536754 and ABIN2850058) western blot analysis in mouse Neuro-2a cell line lysates (35 µg/lane). This demonstrates the LDOC1L antibody detected the LDOC1L protein (arrow).