

Datasheet for ABIN1536760  
**anti-CRISP1 antibody (C-Term)**[Go to Product page](#)

## 1 Image

## Overview

Quantity:	400 µL
Target:	CRISP1
Binding Specificity:	AA 162-191, C-Term
Reactivity:	Human
Host:	Rabbit
Clonality:	Polyclonal
Conjugate:	This CRISP1 antibody is un-conjugated
Application:	Western Blotting (WB)

## Product Details

Immunogen:	This CRISP1 antibody is generated from rabbits immunized with a KLH conjugated synthetic peptide between 162-191 amino acids from the C-terminal region of human CRISP1.
Clone:	RB37912
Isotype:	Ig Fraction
Purification:	This antibody is purified through a protein A column, followed by peptide affinity purification.

## Target Details

Target:	CRISP1
Alternative Name:	CRISP1 ( <a href="#">CRISP1 Products</a> )
Background:	Fertilization consists of a sequence of specific cell-cell interactions culminating in the fusion of

## Target Details

the sperm and egg plasma membranes. Recognition, binding, and fusion occur through the interaction of complementary molecules that are localized to specific domains of the sperm and egg plasma membranes. In the sperm, the postacrosomal region or equatorial segment is involved in sperm-egg plasma membrane fusion. The protein encoded by this gene is a member of the cysteine-rich secretory protein (CRISP) family. This protein is expressed in the epididymis, is secreted into the epididymal lumen, and binds to the postacrosomal region of the sperm head where it plays a role at fertilization in sperm-egg fusion through complementary sites localized on the egg surface. Two isoforms are encoded by transcript variants of this gene.

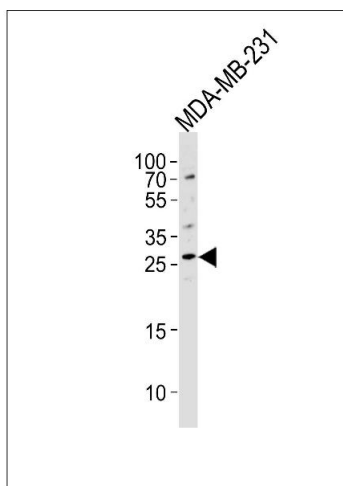
Molecular Weight:	28481
Gene ID:	167
NCBI Accession:	<a href="#">NP_001122</a> , <a href="#">NP_001192149</a> , <a href="#">NP_733758</a>
UniProt:	<a href="#">P54107</a>

## Application Details

Application Notes:	WB: 1:1000
Restrictions:	For Research Use only

## Handling

Format:	Liquid
Buffer:	Purified polyclonal antibody supplied in PBS with 0.09 % (W/V) sodium azide.
Preservative:	Sodium azide
Precaution of Use:	This product contains Sodium azide: a POISONOUS AND HAZARDOUS SUBSTANCE which should be handled by trained staff only.
Storage:	4 °C, -20 °C
Storage Comment:	CRISP1 Antibody (C-term) can be refrigerated at 2-8 °C for up to 6 months. For long term storage, keep at -20 °C.
Expiry Date:	6 months



### Western Blotting

**Image 1.** Western blot analysis of lysate from MDA-MB-231 cell line, using CRISP1 Antibody (C-term) (ABIN1536760 and ABIN2849218). (ABIN1536760 and ABIN2849218) was diluted at 1:1000 at each lane. A goat anti-rabbit IgG H&L(HRP) at 1:5000 dilution was used as the secondary antibody. Lysate at 35 µg per lane.