



[Go to Product page](#)

Datasheet for ABIN1536761
anti-TREM1 antibody (C-Term)

1 Image

Overview

Quantity:	400 µL
Target:	TREM1
Binding Specificity:	AA 162-191, C-Term
Reactivity:	Human
Host:	Rabbit
Clonality:	Polyclonal
Conjugate:	This TREM1 antibody is un-conjugated
Application:	Western Blotting (WB)

Product Details

Immunogen:	This TREM1 antibody is generated from rabbits immunized with a KLH conjugated synthetic peptide between 162-191 amino acids from the C-terminal region of human TREM1.
Clone:	RB39482
Isotype:	Ig Fraction
Purification:	This antibody is purified through a protein A column, followed by peptide affinity purification.

Target Details

Target:	TREM1
Alternative Name:	TREM1 (TREM1 Products)
Background:	Monocyte/macrophage- and neutrophil-mediated inflammatory responses can be stimulated

Target Details

through a variety of receptors, including G protein-linked 7-transmembrane receptors (e.g., FPR1, MIM 136537), Fc receptors (see MIM 146790), CD14 (MIM 158120) and Toll-like receptors (e.g., TLR4, MIM 603030), and cytokine receptors (e.g., IFNGR1, MIM 107470). Engagement of these receptors can also prime myeloid cells to respond to other stimuli. Myeloid cells express receptors belonging to the Ig superfamily, such as TREM1, or to the C-type lectin superfamily. Depending on their transmembrane and cytoplasmic sequence structure, these receptors have either activating (e.g., KIR2DS1, MIM 604952) or inhibitory functions (e.g., KIR2DL1, MIM 604936).

Molecular Weight:	26387
-------------------	-------

Gene ID:	54210
----------	-------

NCBI Accession:	NP_001229518 , NP_001229519 , NP_061113
-----------------	---

UniProt:	Q9NP99
----------	------------------------

Application Details

Application Notes:	WB: 1:1000
--------------------	------------

Restrictions:	For Research Use only
---------------	-----------------------

Handling

Format:	Liquid
---------	--------

Buffer:	Purified polyclonal antibody supplied in PBS with 0.09 % (W/V) sodium azide.
---------	--

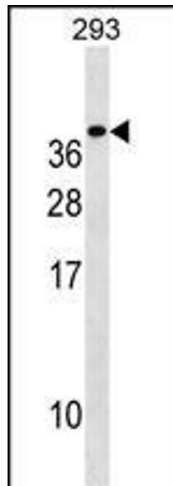
Preservative:	Sodium azide
---------------	--------------

Precaution of Use:	This product contains Sodium azide: a POISONOUS AND HAZARDOUS SUBSTANCE which should be handled by trained staff only.
--------------------	--

Storage:	4 °C,-20 °C
----------	-------------

Storage Comment:	TREM1 Antibody (C-term) can be refrigerated at 2-8 °C for up to 6 months. For long term storage, keep at -20 °C.
------------------	--

Expiry Date:	6 months
--------------	----------



Western Blotting

Image 1. TREM1 Antibody (C-term) (ABIN1536761 and ABIN2850256) western blot analysis in 293 cell line lysates (35 µg/lane). This demonstrates the TREM1 antibody detected the TREM1 protein (arrow).