

Datasheet for ABIN1536766
anti-GPX8 antibody (C-Term)[Go to Product page](#)

1 Image

Overview

Quantity:	400 µL
Target:	GPX8
Binding Specificity:	AA 164-193, C-Term
Reactivity:	Human
Host:	Rabbit
Clonality:	Polyclonal
Conjugate:	This GPX8 antibody is un-conjugated
Application:	Western Blotting (WB)

Product Details

Immunogen:	This GPX8 antibody is generated from rabbits immunized with a KLH conjugated synthetic peptide between 164-193 amino acids from the C-terminal region of human GPX8.
Clone:	RB36510
Isotype:	Ig Fraction
Purification:	This antibody is purified through a protein A column, followed by peptide affinity purification.

Target Details

Target:	GPX8
Alternative Name:	GPX8 (GPX8 Products)
Target Type:	Viral Protein

Target Details

Background: GPX8 belongs to the glutathione peroxidase family. Glutathione peroxidase is an enzyme whose principal function is to protect against damage from endogenously-formed hydroxyperoxides, catalysing the reduction of hydroxyperoxides by glutathione. Several forms of the enzyme are known. It has a catalytic activity of $2 \text{ glutathione} + \text{H}_2\text{O}_2 = \text{glutathione disulfide} + 2 \text{H}_2\text{O}$.

Molecular Weight: 23881

Gene ID: 493869

NCBI Accession: [NP_001008398](#)

UniProt: [Q8TED1](#)

Pathways: [Thyroid Hormone Synthesis](#)

Application Details

Application Notes: WB: 1:1000

Restrictions: For Research Use only

Handling

Format: Liquid

Buffer: Purified polyclonal antibody supplied in PBS with 0.09 % (W/V) sodium azide.

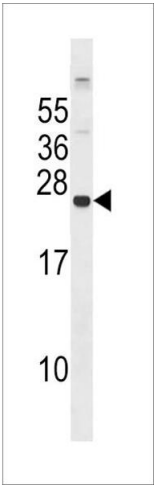
Preservative: Sodium azide

Precaution of Use: This product contains Sodium azide: a POISONOUS AND HAZARDOUS SUBSTANCE which should be handled by trained staff only.

Storage: 4 °C, -20 °C

Storage Comment: GPX8 Antibody (C-term) can be refrigerated at 2-8 °C for up to 6 months. For long term storage, keep at -20 °C.

Expiry Date: 6 months



Western Blotting

Image 1. GPX8 Antibody (C-term) (ABIN1536766 and ABIN2848450) western blot analysis in 293 cell line lysates (35 µg/lane). This demonstrates the GPX8 antibody detected the GPX8 protein (arrow).