

Datasheet for ABIN1536769
anti-RAB22A antibody (C-Term)[Go to Product page](#)

1 Image

Overview

Quantity:	400 µL
Target:	RAB22A
Binding Specificity:	AA 166-192, C-Term
Reactivity:	Human
Host:	Rabbit
Clonality:	Polyclonal
Conjugate:	This RAB22A antibody is un-conjugated
Application:	Western Blotting (WB)

Product Details

Immunogen:	This RAB22A antibody is generated from rabbits immunized with a KLH conjugated synthetic peptide between 166-192 amino acids from the C-terminal region of human RAB22A.
Clone:	RB39644
Isotype:	Ig Fraction
Predicted Reactivity:	M
Purification:	This antibody is purified through a protein A column, followed by peptide affinity purification.

Target Details

Target:	RAB22A
Alternative Name:	RAB22A (RAB22A Products)

Target Details

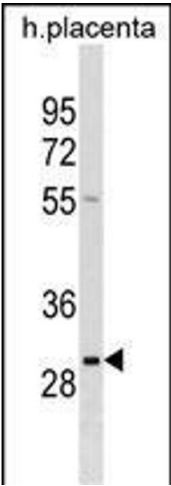
Background:	The protein encoded by this gene is a member of the RAB family of small GTPases. The GTP-bound form of the encoded protein has been shown to interact with early-endosomal antigen 1, and may be involved in the trafficking of and interaction between endosomal compartments.
Molecular Weight:	21855
Gene ID:	57403
NCBI Accession:	NP_065724
UniProt:	Q9UL26

Application Details

Application Notes:	WB: 1:1000
Restrictions:	For Research Use only

Handling

Format:	Liquid
Buffer:	Purified polyclonal antibody supplied in PBS with 0.09 % (W/V) sodium azide.
Preservative:	Sodium azide
Precaution of Use:	This product contains Sodium azide: a POISONOUS AND HAZARDOUS SUBSTANCE which should be handled by trained staff only.
Storage:	4 °C, -20 °C
Storage Comment:	RAB22A Antibody (C-term) can be refrigerated at 2-8 °C for up to 6 months. For long term storage, keep at -20 °C.
Expiry Date:	6 months



Western Blotting

Image 1. RAB22A Antibody (C-term) (ABIN1536769 and ABIN2850288) western blot analysis in human placenta tissue lysates (35 µg/lane). This demonstrates the RAB22A antibody detected the RAB22A protein (arrow).