



[Go to Product page](#)

Datasheet for ABIN1536775
anti-MBD3L1 antibody (C-Term)

1 Image

Overview

Quantity:	400 µL
Target:	MBD3L1
Binding Specificity:	AA 168-194, C-Term
Reactivity:	Human
Host:	Rabbit
Clonality:	Polyclonal
Conjugate:	This MBD3L1 antibody is un-conjugated
Application:	Western Blotting (WB)

Product Details

Immunogen:	This MBD3L1 antibody is generated from rabbits immunized with a KLH conjugated synthetic peptide between 168-194 amino acids from the C-terminal region of human MBD3L1.
Clone:	RB37937
Isotype:	Ig Fraction
Purification:	This antibody is purified through a protein A column, followed by peptide affinity purification.

Target Details

Target:	MBD3L1
Alternative Name:	MBD3L1 (MBD3L1 Products)
Background:	This gene encodes a protein that is related to methyl-CpG-binding proteins but lacks the methyl-

Target Details

CpG binding domain. The protein is localized to discrete areas in the nucleus, and expression appears to be restricted to round spermatids, suggesting that the protein plays a role in the postmeiotic stages of male germ cell development.

Molecular Weight: 21616

Gene ID: 85509

NCBI Accession: [NP_660209](#)

UniProt: [Q8WWY6](#)

Application Details

Application Notes: WB: 1:1000

Restrictions: For Research Use only

Handling

Format: Liquid

Buffer: Purified polyclonal antibody supplied in PBS with 0.09 % (W/V) sodium azide.

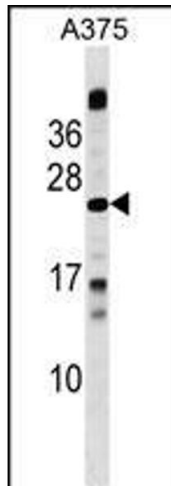
Preservative: Sodium azide

Precaution of Use: This product contains Sodium azide: a POISONOUS AND HAZARDOUS SUBSTANCE which should be handled by trained staff only.

Storage: 4 °C, -20 °C

Storage Comment: MBD3L1 Antibody (C-term) can be refrigerated at 2-8 °C for up to 6 months. For long term storage, keep at -20 °C.

Expiry Date: 6 months



Western Blotting

Image 1. MBD3L1 Antibody (C-term) (ABIN1536775 and ABIN2849751) western blot analysis in cell line lysates (35 µg/lane). This demonstrates the MBD3L1 antibody detected the MBD3L1 protein (arrow).