



Datasheet for ABIN1536776
anti-SOSTDC1 antibody (C-Term)



[Go to Product page](#)

2 Images

Overview

Quantity:	400 µL
Target:	SOSTDC1
Binding Specificity:	AA 169-196, C-Term
Reactivity:	Human, Mouse
Host:	Rabbit
Clonality:	Polyclonal
Conjugate:	This SOSTDC1 antibody is un-conjugated
Application:	Western Blotting (WB)

Product Details

Immunogen:	This SOSTDC1 antibody is generated from rabbits immunized with a KLH conjugated synthetic peptide between 169-196 amino acids from the C-terminal region of human SOSTDC1.
Clone:	RB36513
Isotype:	Ig Fraction
Purification:	This antibody is purified through a protein A column, followed by peptide affinity purification.

Target Details

Target:	SOSTDC1
Alternative Name:	SOSTDC1 (SOSTDC1 Products)
Background:	This gene is a member of the sclerostin family and encodes an N-glycosylated, secreted protein

Target Details

with a C-terminal cystine knot-like domain. This protein functions as a bone morphogenetic protein (BMP) antagonist. Specifically, it directly associates with BMPs, prohibiting them from binding their receptors, thereby regulating BMP signaling during cellular proliferation, differentiation, and programmed cell death.

Molecular Weight: 23307

Gene ID: 25928

NCBI Accession: [NP_056279](#)

UniProt: [Q6X4U4](#)

Application Details

Application Notes: WB: 1:1000. WB: 1:1000

Restrictions: For Research Use only

Handling

Format: Liquid

Buffer: Purified polyclonal antibody supplied in PBS with 0.09 % (W/V) sodium azide.

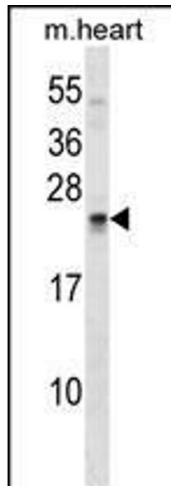
Preservative: Sodium azide

Precaution of Use: This product contains Sodium azide: a POISONOUS AND HAZARDOUS SUBSTANCE which should be handled by trained staff only.

Storage: 4 °C,-20 °C

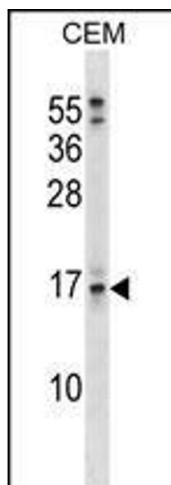
Storage Comment: SOSTDC1 Antibody (C-term) can be refrigerated at 2-8 °C for up to 6 months. For long term storage, keep at -20 °C.

Expiry Date: 6 months



Western Blotting

Image 1. SOSTDC1 Antibody (C-term) (ABIN1536776 and ABIN2849017) western blot analysis in mouse heart tissue lysates (35 µg/lane). This demonstrates the SOSTDC1 antibody detected the SOSTDC1 protein (arrow).



Western Blotting

Image 2. SOSTDC1 Antibody (C-term) (ABIN1536776 and ABIN2849017) western blot analysis in CEM cell line lysates (35 µg/lane). This demonstrates the SOSTDC1 antibody detected the SOSTDC1 protein (arrow).