



[Go to Product page](#)

Datasheet for ABIN1536782
anti-PABPC1L2B antibody (C-Term)

1 Image

Overview

Quantity:	400 µL
Target:	PABPC1L2B
Binding Specificity:	AA 172-200, C-Term
Reactivity:	Human
Host:	Rabbit
Clonality:	Polyclonal
Conjugate:	This PABPC1L2B antibody is un-conjugated
Application:	Western Blotting (WB)

Product Details

Immunogen:	This PABPC1L2B antibody is generated from rabbits immunized with a KLH conjugated synthetic peptide between 172-200 amino acids from the C-terminal region of human PABPC1L2B.
Clone:	RB39178
Isotype:	Ig Fraction
Purification:	This antibody is purified through a protein A column, followed by peptide affinity purification.

Target Details

Target:	PABPC1L2B
Alternative Name:	PABPC1L2B (PABPC1L2B Products)

Target Details

Background: The function of this protein remains unknown.

Molecular Weight: 22799

Gene ID: 340529, 645974

NCBI Accession: [NP_001012995](#), [NP_001035971](#)

UniProt: [Q5JQF8](#)

Application Details

Application Notes: WB: 1:1000

Restrictions: For Research Use only

Handling

Format: Liquid

Buffer: Purified polyclonal antibody supplied in PBS with 0.09 % (W/V) sodium azide.

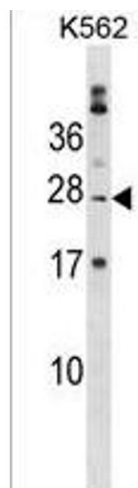
Preservative: Sodium azide

Precaution of Use: This product contains Sodium azide: a POISONOUS AND HAZARDOUS SUBSTANCE which should be handled by trained staff only.

Storage: 4 °C, -20 °C

Storage Comment: PABPC1L2B Antibody (C-term) can be refrigerated at 2-8 °C for up to 6 months. For long term storage, keep at -20 °C.

Expiry Date: 6 months



Western Blotting

Image 1. BPC1L2B Antibody (C-term) (ABIN1536782 and ABIN2850349) western blot analysis in K562 cell line lysates (35 µg/lane). This demonstrates the BPC1L2B antibody detected the BPC1L2B protein (arrow).