

Datasheet for ABIN1536790
anti-CLEC17A antibody (C-Term)[Go to Product page](#)

1 Image

Overview

Quantity:	400 µL
Target:	CLEC17A
Binding Specificity:	AA 176-203, C-Term
Reactivity:	Human
Host:	Rabbit
Clonality:	Polyclonal
Conjugate:	This CLEC17A antibody is un-conjugated
Application:	Western Blotting (WB)

Product Details

Immunogen:	This CLEC17A antibody is generated from rabbits immunized with a KLH conjugated synthetic peptide between 176-203 amino acids from the C-terminal region of human CLEC17A.
Clone:	RB29501
Isotype:	Ig Fraction
Purification:	This antibody is purified through a protein A column, followed by peptide affinity purification.

Target Details

Target:	CLEC17A
Alternative Name:	CLEC17A (CLEC17A Products)
Background:	Cell surface receptor which may be involved in carbohydrate-mediated communication

Target Details

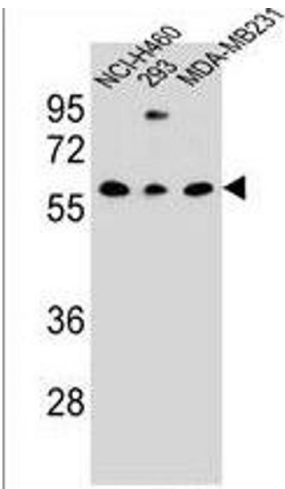
	between cells in the germinal center. Binds glycans with terminal alpha-linked mannose or fucose residues.
Molecular Weight:	42935
Gene ID:	388512
NCBI Accession:	NP_001191047 , NP_997273
UniProt:	Q6ZS10

Application Details

Application Notes:	WB: 1:1000
Restrictions:	For Research Use only

Handling

Format:	Liquid
Buffer:	Purified polyclonal antibody supplied in PBS with 0.09 % (W/V) sodium azide.
Preservative:	Sodium azide
Precaution of Use:	This product contains Sodium azide: a POISONOUS AND HAZARDOUS SUBSTANCE which should be handled by trained staff only.
Storage:	4 °C,-20 °C
Storage Comment:	CLEC17A Antibody (C-term) can be refrigerated at 2-8 °C for up to 6 months. For long term storage, keep at -20 °C.
Expiry Date:	6 months



Western Blotting

Image 1. CLEC17A Antibody (C-term) (ABIN1536790 and ABIN2849828) western blot analysis in NCI-,293,MDA-M cell line lysates (35 µg/lane).This demonstrates the CLEC17A Antibody detected the CLEC17A protein (arrow).