

Datasheet for ABIN1536793
anti-CHMP5 antibody (C-Term)[Go to Product page](#)

1 Image

Overview

Quantity:	400 µL
Target:	CHMP5
Binding Specificity:	AA 178-204, C-Term
Reactivity:	Human
Host:	Rabbit
Clonality:	Polyclonal
Conjugate:	This CHMP5 antibody is un-conjugated
Application:	Western Blotting (WB)

Product Details

Immunogen:	This CHMP5 antibody is generated from rabbits immunized with a KLH conjugated synthetic peptide between 178-204 amino acids from the C-terminal region of human CHMP5.
Clone:	RB38584
Isotype:	Ig Fraction
Predicted Reactivity:	M, Rat
Purification:	This antibody is purified through a protein A column, followed by peptide affinity purification.

Target Details

Target:	CHMP5
Alternative Name:	CHMP5 (CHMP5 Products)

Target Details

Background: CHMP5 belongs to the chromatin-modifying protein/charged multivesicular body protein (CHMP) family. These proteins are components of ESCRT-III (endosomal sorting complex required for transport III), a complex involved in degradation of surface receptor proteins and formation of endocytic multivesicular bodies (MVBs). Some CHMPs have both nuclear and cytoplasmic/vesicular distributions, and one such CHMP, CHMP1A (MIM 164010), is required for both MVB formation and regulation of cell cycle progression (Tsang et al., 2006 [PubMed 16730941]).

Molecular Weight: 24571

Gene ID: 51510

NCBI Accession: [NP_001182465](#), [NP_057494](#)

UniProt: [Q9NZZ3](#)

Application Details

Application Notes: WB: 1:1000

Restrictions: For Research Use only

Handling

Format: Liquid

Buffer: Purified polyclonal antibody supplied in PBS with 0.09 % (W/V) sodium azide.

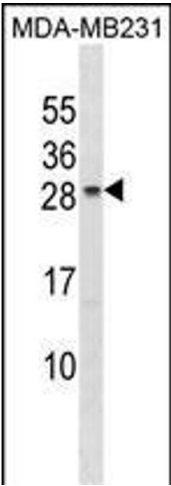
Preservative: Sodium azide

Precaution of Use: This product contains Sodium azide: a POISONOUS AND HAZARDOUS SUBSTANCE which should be handled by trained staff only.

Storage: 4 °C, -20 °C

Storage Comment: CHMP5 Antibody (C-term) can be refrigerated at 2-8 °C for up to 6 months. For long term storage, keep at -20 °C.

Expiry Date: 6 months



Western Blotting

Image 1. CH Antibody (C-term) (ABIN1536793 and ABIN2850019) western blot analysis in MDA-M cell line lysates (35 µg/lane). This demonstrates the CH antibody detected the CH protein (arrow).