



[Go to Product page](#)

Datasheet for ABIN1536796
anti-GJE1 antibody (C-Term)

1 Image

1 Publication

Overview

Quantity:	400 µL
Target:	GJE1
Binding Specificity:	AA 178-205, C-Term
Reactivity:	Mouse
Host:	Rabbit
Clonality:	Polyclonal
Conjugate:	This GJE1 antibody is un-conjugated
Application:	Western Blotting (WB)

Product Details

Immunogen:	This GJE1 antibody is generated from rabbits immunized with a KLH conjugated synthetic peptide between 178-205 amino acids from the C-terminal region of human GJE1.
Clone:	RB30499
Isotype:	Ig Fraction
Purification:	This antibody is purified through a protein A column, followed by peptide affinity purification.

Target Details

Target:	GJE1
Alternative Name:	GJE1 (GJE1 Products)
Background:	One gap junction consists of a cluster of closely packed pairs of transmembrane channels, the

Target Details

connexons, through which materials of low MW diffuse from one cell to a neighboring cell.

Molecular Weight: 23755

Gene ID: 100126572

UniProt: [A6NN92](#)

Pathways: [Sensory Perception of Sound](#)

Application Details

Application Notes: WB: 1:1000

Restrictions: For Research Use only

Handling

Format: Liquid

Buffer: Purified polyclonal antibody supplied in PBS with 0.09 % (W/V) sodium azide.

Preservative: Sodium azide

Precaution of Use: This product contains Sodium azide: a POISONOUS AND HAZARDOUS SUBSTANCE which should be handled by trained staff only.

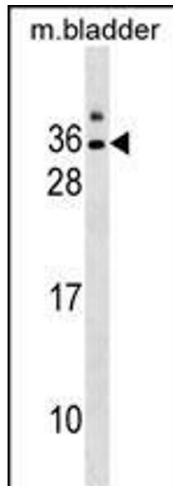
Storage: 4 °C,-20 °C

Storage Comment: GJE1 Antibody (C-term) can be refrigerated at 2-8 °C for up to 6 months. For long term storage, keep at -20 °C.

Expiry Date: 6 months

Publications

Product cited in: Zhang, Xu, Lu, Liu, Liu, Ji, Liu, Ouyang, He: "VASP activation via the Gα13/RhoA/PKA pathway mediates cucurbitacin-B-induced actin aggregation and cofilin-actin rod formation." in: **PLoS ONE**, Vol. 9, Issue 4, pp. e93547, (2014) ([PubMed](#)).



Western Blotting

Image 1. GJE1 Antibody (C-term) (ABIN1536796 and ABIN2850313) western blot analysis in mouse bladder tissue lysates (35 µg/lane). This demonstrates the GJE1 antibody detected the GJE1 protein (arrow).