

Datasheet for ABIN1536797  
**anti-CRYBB3 antibody (C-Term)**[Go to Product page](#)

## 1 Image

## Overview

Quantity:	400 µL
Target:	CRYBB3 (CRYbB3)
Binding Specificity:	AA 179-207, C-Term
Reactivity:	Human
Host:	Rabbit
Clonality:	Polyclonal
Conjugate:	This CRYBB3 antibody is un-conjugated
Application:	Western Blotting (WB)

## Product Details

Immunogen:	This CRYBB3 antibody is generated from rabbits immunized with a KLH conjugated synthetic peptide between 179-207 amino acids from the C-terminal region of human CRYBB3.
Clone:	RB30428
Isotype:	Ig Fraction
Purification:	This antibody is purified through a protein A column, followed by peptide affinity purification.

## Target Details

Target:	CRYBB3 (CRYbB3)
Alternative Name:	CRYBB3 ( <a href="#">CRYbB3 Products</a> )
Background:	Crystallins are separated into two classes: taxon-specific, or enzyme, and ubiquitous. The latter

## Target Details

class constitutes the major proteins of vertebrate eye lens and maintains the transparency and refractive index of the lens. Since lens central fiber cells lose their nuclei during development, these crystallins are made and then retained throughout life, making them extremely stable proteins. Mammalian lens crystallins are divided into alpha, beta, and gamma families, beta and gamma crystallins are also considered as a superfamily. Alpha and beta families are further divided into acidic and basic groups. Seven protein regions exist in crystallins: four homologous motifs, a connecting peptide, and N- and C-terminal extensions. Beta-crystallins, the most heterogeneous, differ by the presence of the C-terminal extension (present in the basic group, none in the acidic group). Beta-crystallins form aggregates of different sizes and are able to self-associate to form dimers or to form heterodimers with other beta-crystallins. This gene, a beta basic group member, is part of a gene cluster with beta-A4, beta-B1, and beta-B2. [provided by RefSeq].

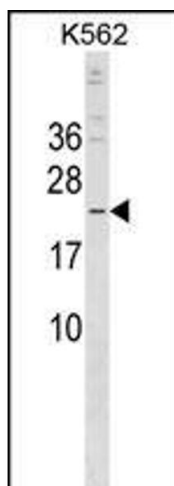
Molecular Weight:	24252
Gene ID:	1417
NCBI Accession:	<a href="#">NP_004067</a>
UniProt:	<a href="#">P26998</a>

## Application Details

Application Notes:	WB: 1:1000
Restrictions:	For Research Use only

## Handling

Format:	Liquid
Buffer:	Purified polyclonal antibody supplied in PBS with 0.09 % (W/V) sodium azide.
Preservative:	Sodium azide
Precaution of Use:	This product contains Sodium azide: a POISONOUS AND HAZARDOUS SUBSTANCE which should be handled by trained staff only.
Storage:	4 °C, -20 °C
Storage Comment:	CRYBB3 Antibody (C-term) can be refrigerated at 2-8 °C for up to 6 months. For long term storage, keep at -20 °C.
Expiry Date:	6 months



#### Western Blotting

**Image 1.** CRYBB3 Antibody (C-term) (ABIN1536797 and ABIN2849948) western blot analysis in K562 cell line lysates (35 µg/lane). This demonstrates the CRYBB3 antibody detected the CRYBB3 protein (arrow).