

Datasheet for ABIN1536800
anti-LIN7A antibody (C-Term)[Go to Product page](#)

1 Image

Overview

Quantity:	400 µL
Target:	LIN7A
Binding Specificity:	AA 180-207, C-Term
Reactivity:	Human
Host:	Rabbit
Clonality:	Polyclonal
Conjugate:	This LIN7A antibody is un-conjugated
Application:	Western Blotting (WB)

Product Details

Immunogen:	This LIN7A antibody is generated from rabbits immunized with a KLH conjugated synthetic peptide between 180-207 amino acids from the C-terminal region of human LIN7A.
Clone:	RB37057
Isotype:	Ig Fraction
Predicted Reactivity:	B, M, Rat
Purification:	This antibody is purified through a protein A column, followed by peptide affinity purification.

Target Details

Target:	LIN7A
Alternative Name:	LIN7A (LIN7A Products)

Target Details

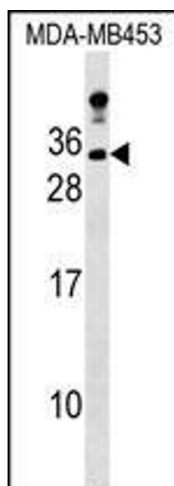
Background:	LIN7A plays a role in establishing and maintaining the asymmetric distribution of channels and receptors at the plasma membrane of polarized cells. Forms membrane-associated multiprotein complexes that may regulate delivery and recycling of proteins to the correct membrane domains. The tripartite complex composed of LIN7 (LIN7A, LIN7B or LIN7C), CASK and APBA1 may have the potential to couple synaptic vesicle exocytosis to cell adhesion in brain. Ensures the proper localization of GRIN2B (subunit 2B of the NMDA receptor) to neuronal postsynaptic density and may function in localizing synaptic vesicles at synapses where it is recruited by beta-catenin and cadherin. Required to localize Kir2 channels, GABA transporter (SLC6A12) and EGFR/ERBB1, ERBB2, ERBB3 and ERBB4 to the basolateral membrane of epithelial cells.
Molecular Weight:	25997
Gene ID:	8825
NCBI Accession:	NP_004655
UniProt:	O14910
Pathways:	Synaptic Membrane

Application Details

Application Notes:	WB: 1:1000
Restrictions:	For Research Use only

Handling

Format:	Liquid
Buffer:	Purified polyclonal antibody supplied in PBS with 0.09 % (W/V) sodium azide.
Preservative:	Sodium azide
Precaution of Use:	This product contains Sodium azide: a POISONOUS AND HAZARDOUS SUBSTANCE which should be handled by trained staff only.
Storage:	4 °C,-20 °C
Storage Comment:	LIN7A Antibody (C-term) can be refrigerated at 2-8 °C for up to 6 months. For long term storage, keep at -20 °C.
Expiry Date:	6 months



Western Blotting

Image 1. LIN7A Antibody (C-term) (ABIN1536800 and ABIN2848886) western blot analysis in MDA-M cell line lysates (35 µg/lane). This demonstrates the LIN7A antibody detected the LIN7A protein (arrow).