



[Go to Product page](#)

Datasheet for ABIN1536810
anti-FBXL12 antibody (C-Term)

1 Image

Overview

Quantity:	400 µL
Target:	FBXL12
Binding Specificity:	AA 277-303, C-Term
Reactivity:	Human
Host:	Rabbit
Clonality:	Polyclonal
Conjugate:	This FBXL12 antibody is un-conjugated
Application:	Western Blotting (WB)

Product Details

Immunogen:	This FBXL12 antibody is generated from rabbits immunized with a KLH conjugated synthetic peptide between 277-303 amino acids from the C-terminal region of human FBXL12.
Clone:	RB37589
Isotype:	Ig Fraction
Predicted Reactivity:	M
Purification:	This antibody is purified through a protein A column, followed by peptide affinity purification.

Target Details

Target:	FBXL12
Alternative Name:	FBXL12 (FBXL12 Products)

Target Details

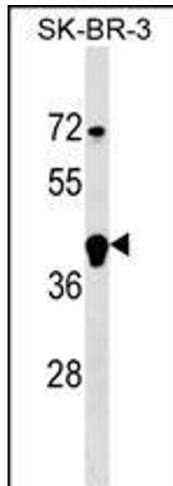
Background:	Members of the F-box protein family, such as FBXL12, are characterized by an approximately 40-amino acid F-box motif. SCF complexes, formed by SKP1 (MIM 601434), cullin (see CUL1, MIM 603134), and F-box proteins, act as protein-ubiquitin ligases. F-box proteins interact with SKP1 through the F box, and they interact with ubiquitination targets through other protein interaction domains (Jin et al., 2004 [PubMed 15520277]).[supplied by OMIM].
Molecular Weight:	37026
Gene ID:	54850
NCBI Accession:	NP_060173
UniProt:	Q9NXK8
Pathways:	SARS-CoV-2 Protein Interactome

Application Details

Application Notes:	WB: 1:1000
Restrictions:	For Research Use only

Handling

Format:	Liquid
Buffer:	Purified polyclonal antibody supplied in PBS with 0.09 % (W/V) sodium azide.
Preservative:	Sodium azide
Precaution of Use:	This product contains Sodium azide: a POISONOUS AND HAZARDOUS SUBSTANCE which should be handled by trained staff only.
Storage:	4 °C,-20 °C
Storage Comment:	FBXL12 Antibody (C-term) can be refrigerated at 2-8 °C for up to 6 months. For long term storage, keep at -20 °C.
Expiry Date:	6 months



Western Blotting

Image 1. FBXL12 Antibody (C-term) (ABIN1536810 and ABIN2849431) western blot analysis in SK-BR-3 cell line lysates (35 µg/lane). This demonstrates the FBXL12 antibody detected the FBXL12 protein (arrow).