



[Go to Product page](#)

Datasheet for ABIN1536817

anti-Synaptoporin antibody (C-Term)

1 Image

Overview

Quantity:	400 µL
Target:	Synaptoporin (SYNPR)
Binding Specificity:	AA 192-218, C-Term
Reactivity:	Human
Host:	Rabbit
Clonality:	Polyclonal
Conjugate:	This Synaptoporin antibody is un-conjugated
Application:	Western Blotting (WB)

Product Details

Immunogen:	This SYNPR antibody is generated from rabbits immunized with a KLH conjugated synthetic peptide between 192-218 amino acids from the C-terminal region of human SYNPR.
Clone:	RB39893
Isotype:	Ig Fraction
Predicted Reactivity:	M, Rat
Purification:	This antibody is purified through a protein A column, followed by peptide affinity purification.

Target Details

Target:	Synaptoporin (SYNPR)
Alternative Name:	SYNPR (SYNPR Products)

Target Details

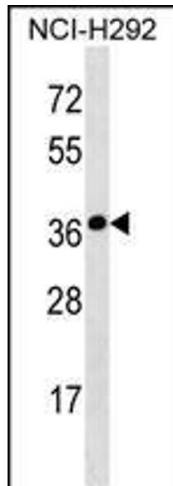
Background:	Intrinsic membrane protein of small synaptic vesicles. Probable vesicular channel protein (By similarity).
Molecular Weight:	29166
Gene ID:	132204
NCBI Accession:	NP_001123475 , NP_653243
UniProt:	Q8TBG9

Application Details

Application Notes:	WB: 1:1000
Restrictions:	For Research Use only

Handling

Format:	Liquid
Buffer:	Purified polyclonal antibody supplied in PBS with 0.09 % (W/V) sodium azide.
Preservative:	Sodium azide
Precaution of Use:	This product contains Sodium azide: a POISONOUS AND HAZARDOUS SUBSTANCE which should be handled by trained staff only.
Storage:	4 °C,-20 °C
Storage Comment:	SYNPR Antibody (C-term) can be refrigerated at 2-8 °C for up to 6 months. For long term storage, keep at -20 °C.
Expiry Date:	6 months



Western Blotting

Image 1. SYNPR Antibody (C-term) (ABIN1536817 and ABIN2850294) western blot analysis in NCI- cell line lysates (35 µg/lane). This demonstrates the SYNPR antibody detected the SYNPR protein (arrow).