

Datasheet for ABIN1536818

**anti-Der1-Like Domain Family, Member 2 (DERL2) (AA 191-219), (C-Term) antibody**[Go to Product page](#)**1** Image

## Overview

Quantity:	400 µL
Target:	Der1-Like Domain Family, Member 2 (DERL2)
Binding Specificity:	AA 191-219, C-Term
Reactivity:	Mouse
Host:	Rabbit
Clonality:	Polyclonal
Conjugate:	Un-conjugated
Application:	Western Blotting (WB)

## Product Details

Immunogen:	This Mouse Derl2 antibody is generated from rabbits immunized with a KLH conjugated synthetic peptide between 191-219 amino acids from the C-terminal region of mouse Derl2.
Clone:	RB40190
Isotype:	Ig Fraction
Purification:	This antibody is purified through a protein A column, followed by peptide affinity purification.

## Target Details

Target:	Der1-Like Domain Family, Member 2 (DERL2)
Alternative Name:	Derl2 ( <a href="#">DERL2 Products</a> )
Background:	Functional component of endoplasmic reticulum-associated degradation (ERAD) for misfolded

## Target Details

luminal glycoproteins, but not that of misfolded nonglycoproteins. May act by forming a channel that allows the retrotranslocation of misfolded glycoproteins into the cytosol where they are ubiquitinated and degraded by the proteasome. May mediate the interaction between VCP and the degradation substrate (By similarity).

Molecular Weight: 27640

Gene ID: 116891

NCBI Accession: [NP\\_291040](#)

UniProt: [Q8BNI4](#)

Pathways: [ER-Nucleus Signaling](#), [Feeding Behaviour](#)

## Application Details

Application Notes: WB: 1:1000

Restrictions: For Research Use only

## Handling

Format: Liquid

Buffer: Purified polyclonal antibody supplied in PBS with 0.09 % (W/V) sodium azide.

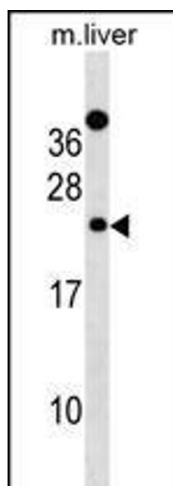
Preservative: Sodium azide

Precaution of Use: This product contains Sodium azide: a POISONOUS AND HAZARDOUS SUBSTANCE which should be handled by trained staff only.

Storage: 4 °C,-20 °C

Storage Comment: Mouse Derl2 Antibody (C-term) can be refrigerated at 2-8 °C for up to 6 months. For long term storage, keep at -20 °C.

Expiry Date: 6 months



#### Western Blotting

**Image 1.** Mouse Derl2 Antibody (C-term) (ABIN1536818 and ABIN2838316) western blot analysis in mouse liver tissue lysates (35 µg/lane). This demonstrates the Derl2 antibody detected the Derl2 protein (arrow).