



[Go to Product page](#)

Datasheet for ABIN1536820
anti-CCDC144NL antibody (C-Term)

1 Image

Overview

Quantity:	400 µL
Target:	CCDC144NL
Binding Specificity:	AA 192-221, C-Term
Reactivity:	Human
Host:	Rabbit
Clonality:	Polyclonal
Conjugate:	This CCDC144NL antibody is un-conjugated
Application:	Western Blotting (WB)

Product Details

Immunogen:	This CCDC144NL antibody is generated from rabbits immunized with a KLH conjugated synthetic peptide between 192-221 amino acids from the C-terminal region of human CCDC144NL.
Clone:	RB37533
Isotype:	Ig Fraction
Purification:	This antibody is purified through a protein A column, followed by peptide affinity purification.

Target Details

Target:	CCDC144NL
Alternative Name:	CCDC144NL (CCDC144NL Products)

Target Details

Background: The function of this protein remains unknown.

Molecular Weight: 23810

Gene ID: 339184

NCBI Accession: [NP_001004306](#)

UniProt: [Q6NUI1](#)

Application Details

Application Notes: WB: 1:1000

Restrictions: For Research Use only

Handling

Format: Liquid

Buffer: Purified polyclonal antibody supplied in PBS with 0.09 % (W/V) sodium azide.

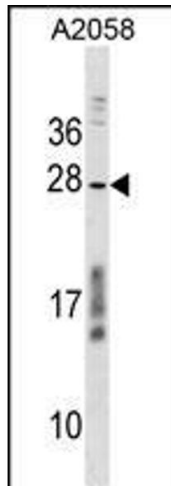
Preservative: Sodium azide

Precaution of Use: This product contains Sodium azide: a POISONOUS AND HAZARDOUS SUBSTANCE which should be handled by trained staff only.

Storage: 4 °C, -20 °C

Storage Comment: CCDC144NL Antibody (C-term) can be refrigerated at 2-8 °C for up to 6 months. For long term storage, keep at -20 °C.

Expiry Date: 6 months



Western Blotting

Image 1. CCDC144NL Antibody (C-term) (ABIN1536820 and ABIN2849355) western blot analysis in cell line lysates (35 µg/lane). This demonstrates the CCDC144NL antibody detected the CCDC144NL protein (arrow).