

Datasheet for ABIN1536821
anti-SRA1 antibody (C-Term)[Go to Product page](#)

1 Image

Overview

Quantity:	400 µL
Target:	SRA1
Binding Specificity:	AA 193-222, C-Term
Reactivity:	Human
Host:	Rabbit
Clonality:	Polyclonal
Conjugate:	This SRA1 antibody is un-conjugated
Application:	Western Blotting (WB)

Product Details

Immunogen:	This SRA1 antibody is generated from rabbits immunized with a KLH conjugated synthetic peptide between 193-222 amino acids from the C-terminal region of human SRA1.
Clone:	RB36734
Isotype:	Ig Fraction
Purification:	This antibody is purified through a protein A column, followed by peptide affinity purification.

Target Details

Target:	SRA1
Alternative Name:	SRA1 (SRA1 Products)
Background:	This gene is involved in transcriptional coactivation by steroid receptors. There is currently data

Target Details

suggesting this gene encodes both a non-coding RNA that functions as part of a ribonucleoprotein complex and a protein coding mRNA. Increased expression of both the transcript and the protein is associated with cancer.

Molecular Weight: 25673

Gene ID: 10011

NCBI Accession: [NP_001030312](#)

UniProt: [Q9HD15](#)

Pathways: [EGFR Signaling Pathway](#), [Stem Cell Maintenance](#), [Regulation of Muscle Cell Differentiation](#), [Tube Formation](#), [Skeletal Muscle Fiber Development](#)

Application Details

Application Notes: WB: 1:1000

Restrictions: For Research Use only

Handling

Format: Liquid

Buffer: Purified polyclonal antibody supplied in PBS with 0.09 % (W/V) sodium azide.

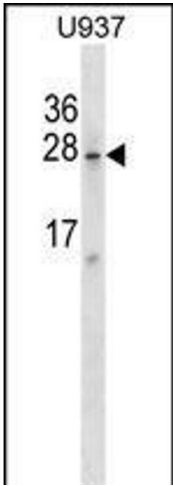
Preservative: Sodium azide

Precaution of Use: This product contains Sodium azide: a POISONOUS AND HAZARDOUS SUBSTANCE which should be handled by trained staff only.

Storage: 4 °C,-20 °C

Storage Comment: SRA1 Antibody (C-term) can be refrigerated at 2-8 °C for up to 6 months. For long term storage, keep at -20 °C.

Expiry Date: 6 months



Western Blotting

Image 1. SRA1 Antibody (C-term) (ABIN1536821 and ABIN2849023) western blot analysis in cell line lysates (35 µg/lane). This demonstrates the SRA1 antibody detected the SRA1 protein (arrow).