



[Go to Product page](#)

Datasheet for ABIN1536824  
**anti-CD300c antibody (C-Term)**

1 Image

Overview

Quantity:	400 µL
Target:	CD300c (CD300C)
Binding Specificity:	AA 195-224, C-Term
Reactivity:	Human
Host:	Rabbit
Clonality:	Polyclonal
Conjugate:	This CD300c antibody is un-conjugated
Application:	Western Blotting (WB)

Product Details

Immunogen:	This CD300C antibody is generated from rabbits immunized with a KLH conjugated synthetic peptide between 195-224 amino acids from the C-terminal region of human CD300C.
Clone:	RB36607
Isotype:	Ig Fraction
Purification:	This antibody is purified through a protein A column, followed by peptide affinity purification.

Target Details

Target:	CD300c (CD300C)
Alternative Name:	CD300C ( <a href="#">CD300C Products</a> )
Background:	The CMRF35 antigen, which was identified by reactivity with a monoclonal antibody, is present

## Target Details

---

on monocytes, neutrophils, and some T and B lymphocytes (Jackson et al., 1992 [PubMed 1349532]).

Molecular Weight: 24830

Gene ID: 10871

NCBI Accession: [NP\\_006669](#)

UniProt: [Q08708](#)

## Application Details

---

Application Notes: WB: 1:1000

Restrictions: For Research Use only

## Handling

---

Format: Liquid

Buffer: Purified polyclonal antibody supplied in PBS with 0.09 % (W/V) sodium azide.

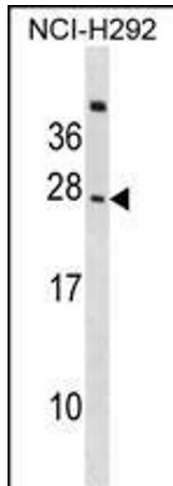
Preservative: Sodium azide

Precaution of Use: This product contains Sodium azide: a POISONOUS AND HAZARDOUS SUBSTANCE which should be handled by trained staff only.

Storage: 4 °C, -20 °C

Storage Comment: CD300C Antibody (C-term) can be refrigerated at 2-8 °C for up to 6 months. For long term storage, keep at -20 °C.

Expiry Date: 6 months



#### Western Blotting

**Image 1.** CD300C Antibody (C-term) (ABIN1536824 and ABIN2848528) western blot analysis in NCI- cell line lysates (35 µg/lane). This demonstrates the CD300C antibody detected the CD300C protein (arrow).