

Datasheet for ABIN1536828
anti-PTCRA antibody (C-Term)[Go to Product page](#)

1 Image

Overview

Quantity:	400 µL
Target:	PTCRA
Binding Specificity:	AA 197-225, C-Term
Reactivity:	Human
Host:	Rabbit
Clonality:	Polyclonal
Conjugate:	This PTCRA antibody is un-conjugated
Application:	Western Blotting (WB)

Product Details

Immunogen:	This PTCRA antibody is generated from rabbits immunized with a KLH conjugated synthetic peptide between 197-225 amino acids from the C-terminal region of human PTCRA.
Clone:	RB39212
Isotype:	Ig Fraction
Purification:	This antibody is purified through a protein A column, followed by peptide affinity purification.

Target Details

Target:	PTCRA
Alternative Name:	PTCRA (PTCRA Products)
Background:	In immature T cells the T-cell receptor beta-chain gene (TCRB, MIM 186930) is rearranged and

Target Details

expressed before the TCRA (MIM 186880) chain. At this early stage, TCRB can associate with the pre-T-cell receptor alpha chain (PTCRA). The PTCRA, together with TCRB and the CD3 complex (see MIM 186740), minimally make up the pre-T cell receptor (pre-TCR), which regulates early T cell development.

Molecular Weight: 29266

Gene ID: 171558

NCBI Accession: [NP_001230097](#), [NP_001230098](#), [NP_001230099](#), [NP_612153](#)

UniProt: [Q6ISU1](#)

Pathways: [Cancer Immune Checkpoints](#)

Application Details

Application Notes: WB: 1:1000

Restrictions: For Research Use only

Handling

Format: Liquid

Buffer: Purified polyclonal antibody supplied in PBS with 0.09 % (W/V) sodium azide.

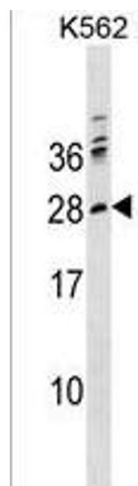
Preservative: Sodium azide

Precaution of Use: This product contains Sodium azide: a POISONOUS AND HAZARDOUS SUBSTANCE which should be handled by trained staff only.

Storage: 4 °C,-20 °C

Storage Comment: PTCRA Antibody (C-term) can be refrigerated at 2-8 °C for up to 6 months. For long term storage, keep at -20 °C.

Expiry Date: 6 months



Western Blotting

Image 1. PTCRA Antibody (C-term) (ABIN1536828 and ABIN2850366) western blot analysis in K562 cell line lysates (35 µg/lane). This demonstrates the PTCRA antibody detected the PTCRA protein (arrow).